

BERGEN TOWNSHIP

Each township has six files containing six sections in each, and one file containing all 36 sections.

Bergen01to06.pdf
Bergen07to12.pdf
Bergen13to18.pdf
Bergen19to24.pdf
Bergen25to30.pdf
Bergen31to36.pdf
BergenAll36.pdf

The points are listed starting with the point above the SE corner and continuing in a counter-clockwise rotation around the section. This normally begins with the East point, Northeast, then North, but may also include Witness Corners, and/or Meander Corners.

Definitions

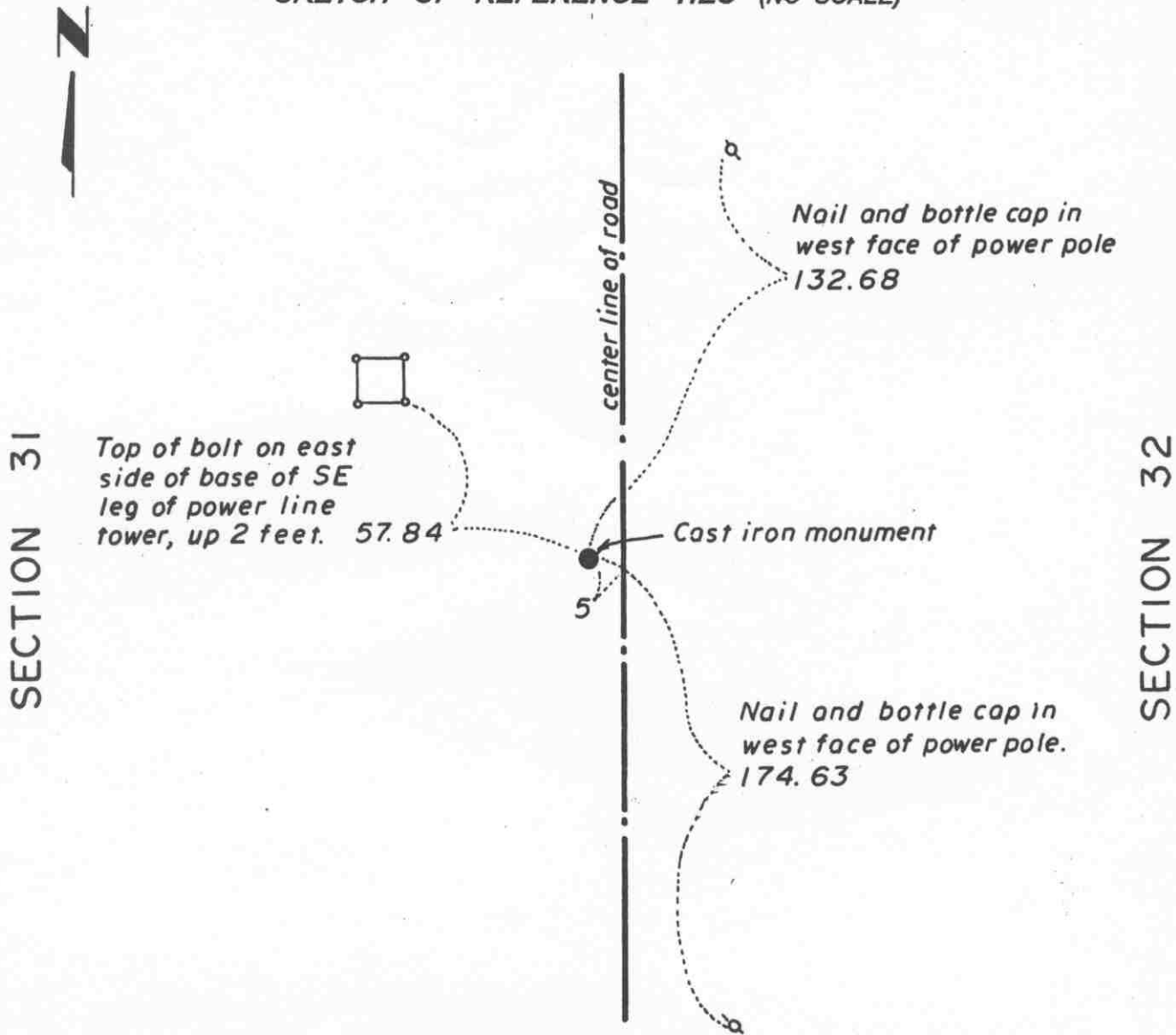
Witness Corner: A witness corner “stands in” when the true corner cannot be monumented or occupied because of difficult terrain or obstruction of the corner sight. The witness corner must be on the section line and is usually 5 or 10 chains away from the true corner.

Meander Corner: The intersection of a township, range, or section line and the banks of a navigable stream or meandering body of water.

Certificate of Location of Government Corner

EAST QUARTER corner, Section 31, Township 116 North, Range 27 West

SKETCH OF REFERENCE TIES (NO SCALE)



Statement of evidence relative to this corner location on sheet 2

I hereby certify that this document was prepared by me or under my direct supervision.

Willard Pellinen
 Willard Pellinen
 McLeod County Surveyor
 License No. 9626.

Date Feb. 4, 1995.

**OFFICE OF THE COUNTY RECORDER
 MCLEOD COUNTY, MINNESOTA**

I hereby certify that this document was filed in this office at 9 o'clock A. M. on the 6th day of February, 19 95.

Carmen Ottilie Mulder, County Recorder

By _____, Deputy.

Document No. 264034

Certificate of Location of Government Corner

East Quarter Corner, Section 31, Township 116 North, Range 27 West

November, 1856. E. N. Darling of the General Land Office established this corner. He set a post in a dry marsh and marked an 8 inch aspen and a 7 inch elm for bearing trees.

September 8, 1939. Survey notes show a found old stake down 3 1/2 feet in line with a fence to the east. A 1 inch by 30 inch steel stake was set with a large stone on top.

July 26, 1982. We excavated for the corner, John Tupa from Hutchinson with a backhoe. We found a 16 inch diameter stone down 1 1/2 feet and a 1 inch diameter steel stake down 2 1/2 feet. We took available ties and left steel stake in place.

August 25, 1982. We set a McLeod County cast iron monument at the corner.

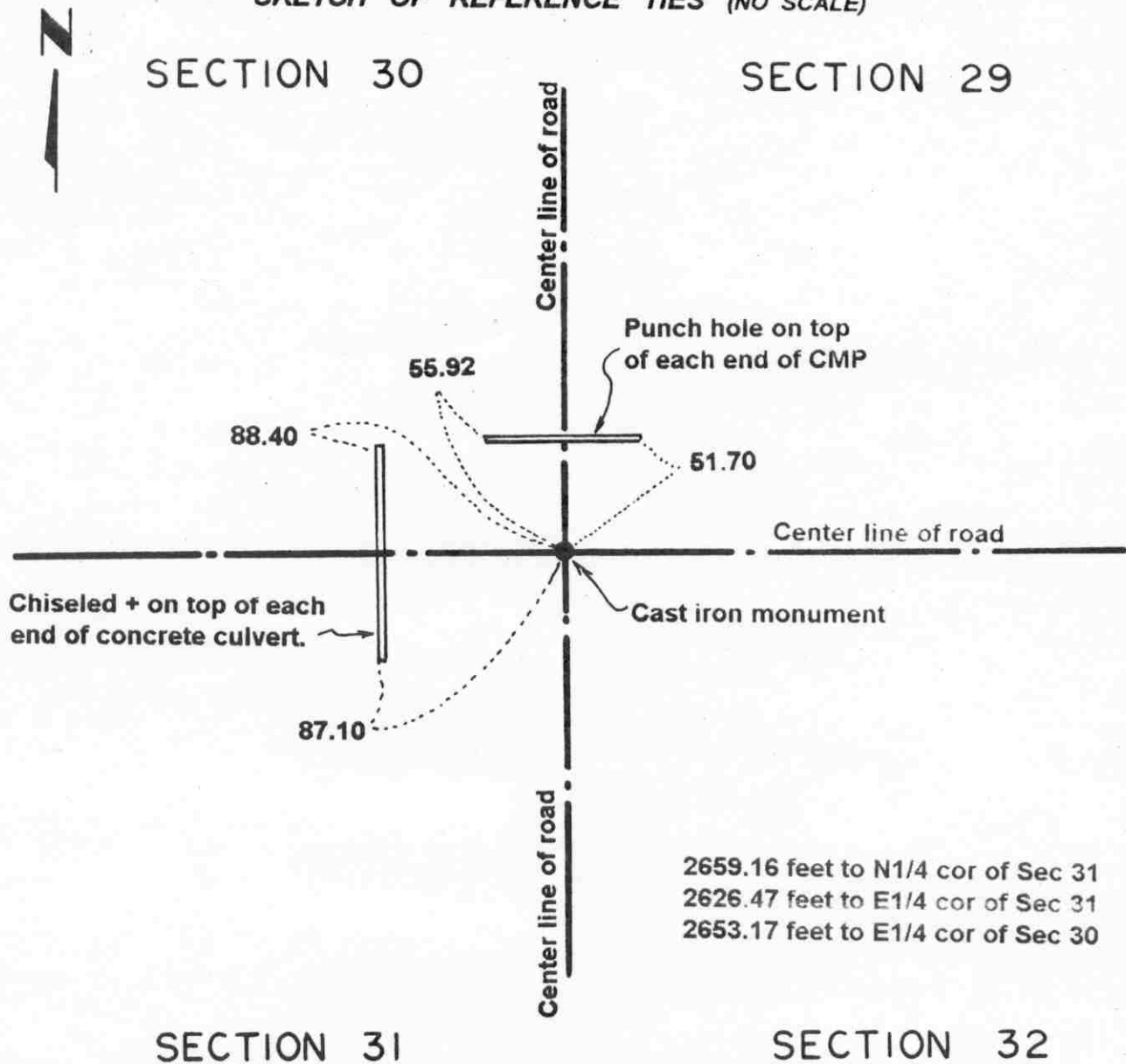
We measured 2655.67 feet to the southeast corner of Section 31, compared with a distance of 2656.5 in 1939. We measured 2626.47 feet to the northeast corner of Section 31. We had an angle of 180 degrees 15 minutes 39 seconds at the corner at the west side of the section line.

January 11, 1995. We found the monument in good condition down 10 inches below the surface of the road and took new reference ties.

Certificate of Location of Government Corner

NORTHEAST corner, Section 31, Township 116 North, Range 27 West

SKETCH OF REFERENCE TIES (NO SCALE)



2659.16 feet to N1/4 cor of Sec 31
 2626.47 feet to E1/4 cor of Sec 31
 2653.17 feet to E1/4 cor of Sec 30

Statement of evidence relative to this corner location on sheet 2

I hereby certify that this document was prepared by me or under my direct supervision.

Willard Pellinen
 Willard Pellinen
 McLeod County Surveyor
 License No. 9626.

Date Dec. 13, 1995

OFFICE OF THE COUNTY RECORDER
 MCLEOD COUNTY, MINNESOTA

I hereby certify that this document was filed in this office at 9 o'clock A. M. on the 9th day of January, 19 96.

Carmen Ostlie Mulder, County Recorder

By Charleen Engstrom, Deputy.

Document No. 270206

Certificate of Location of Government Corner
Northeast Corner, Section 31, Township 116 North, Range 27 West

November, 1856. E. N. Darling of the General Land Office established this corner. He set a post and marked 4 aspens for bearing trees.

November, 1975. R. C. M., surveyors from Gaylord, MN., dug for the corner at the center line intersection of roads north, south, east and west. Down 6 feet below the surface of the road they found a broken fence post with the bottom portion standing upright. They took ties and set an iron pipe at the surface.

July 29, 1976. Dickman Knutson, county surveyor, replaced the iron pipe with a McLeod County cast iron monument and took available ties.

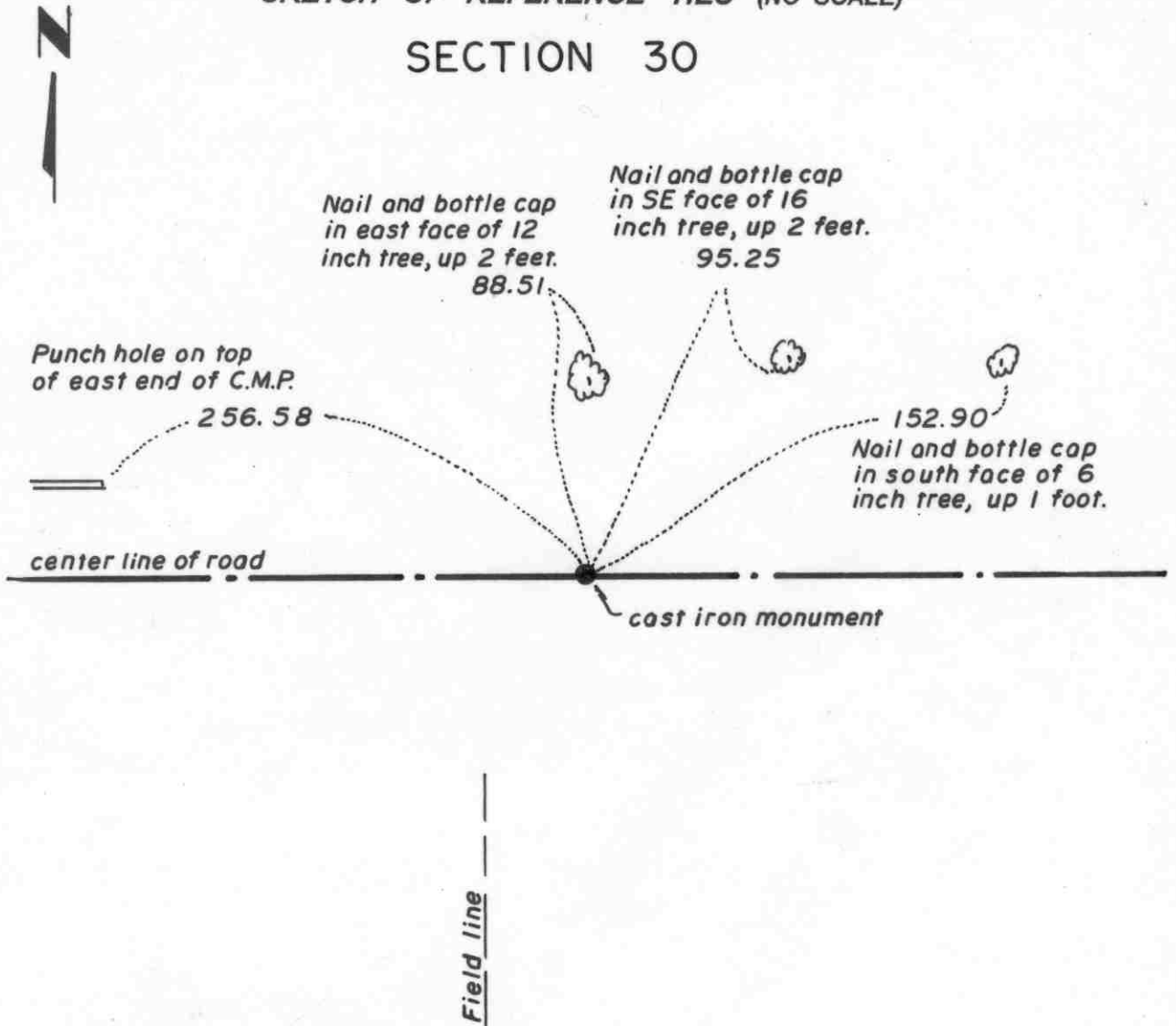
December, 1994. The monument set by Knutson is accepted as marking the location of the government corne. It fits long standing occupation lines (the roads) and it perpetuates the location of an older monument (the fence post).

Certificate of Location of Government Corner

NORTH QUARTER corner, Section 31, Township 116 North, Range 27 West

SKETCH OF REFERENCE TIES (NO SCALE)

SECTION 30



SECTION 31

Statement of evidence relative to this corner location on sheet 2

I hereby certify that this document was prepared by me or under my direct supervision.

Willard Pellinen
Willard Pellinen
McLeod County Surveyor
License No. 9626.

Date Feb 4, 1995

OFFICE OF THE COUNTY RECORDER
MCLEOD COUNTY, MINNESOTA

I hereby certify that this document was filed in this office at 9 o'clock A.M. on the 6th day of February, 19 95.

(Carmen) Obelia Mulder, County Recorder

By _____, Deputy.

Document No. 264035

Certificate of Location of Government Corner

North Quarter Corner, Section 31, Township 116 North, Range 27 West

November, 1856. E. N. Darling of the General Land Office established this corner. He set a post in a dry marsh and marked 2 aspens for bearing trees.

November 13, 1974. R.C.M., surveyors from Gaylord, MN., excavated for this corner. They found an oblong granite stone, 1 foot long, 8 inches in diameter, down 1 1/2 feet below the surface of the road. This was on the center of the east-west road in line with a field line to the south. They took ties and set an iron pipe at the surface of the road.

July 29, 1975. Dickman Knutson, county surveyor, replaced the iron pipe with a McLeod County cast iron monument and took available ties.

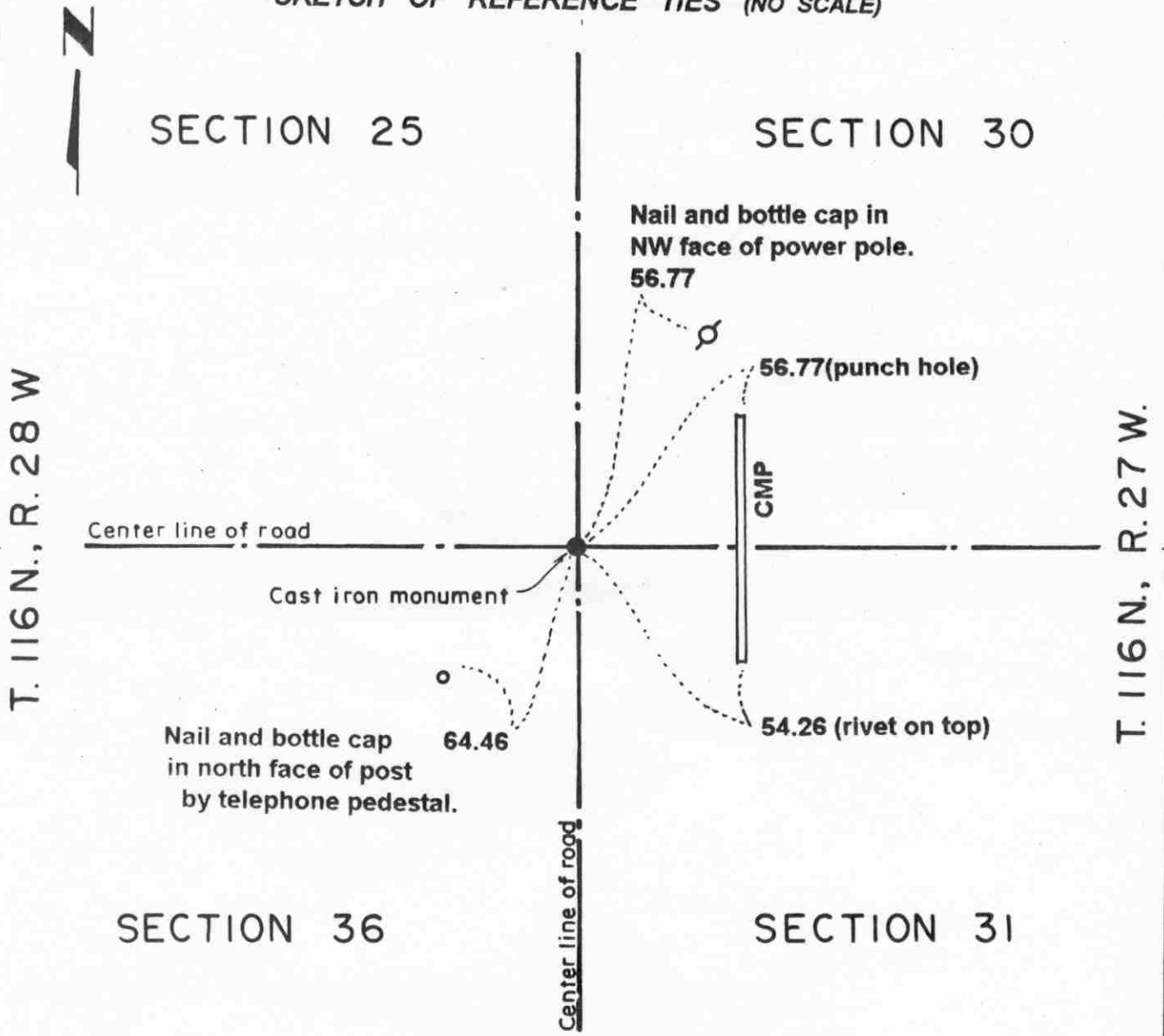
We measured 2429.52 feet to the northwest corner and 2661.71 feet to the northeast corner of Section 30. This corner is 27.18 feet west and 0.10 feet south of a lost position for this corner.

January 11, 1995. We found the monument in good condition down 8 inches below the surface of the road and took new reference ties.

Certificate of Location of Government Corner

Northeast corner, Section 36, Township 116 North, Range 28 West

SKETCH OF REFERENCE TIES (NO SCALE)



Statement of evidence relative to this corner location on sheet 2

I hereby certify that this document was prepared by me or under my direct supervision.

Willard Pellinen
 Willard Pellinen
 McLeod County Surveyor
 License No. 9626.

Date Oct. 9, 1995

**OFFICE OF THE COUNTY RECORDER
 MCLEOD COUNTY, MINNESOTA**

I hereby certify that this document was filed in this office at 9 o'clock A. M. on the 13th day of October 19 95.

Carmen Josie Gulder, County Recorder

By _____, Deputy.

Document No. 268603

Certificate of Location of Government Corner
Northeast Corner, Section 36, Township 116 North, Range 28 West

1855. John Ryan of the General Land Office established this corner. He set a post in a wet marsh and marked a 7 inch cherry tree, a 7 inch aspen and a 14 inch aspen for bearing trees.

1968. Adjoining land owners agree the corner is the center line intersection of the roads.

December, 1968. Dickman Knutson, county surveyor, dug for the corner. He found an iron pin and a wood stake and took reference ties. This was at the center line of the roads, north, south, east and west.

1969. Knutson set a McLeod County cast iron monument.

July 7, 1987. We found the monument in good condition down 4 inches below the surface of the bituminous road and took new available ties.

June, 1994. We checked the reference ties.

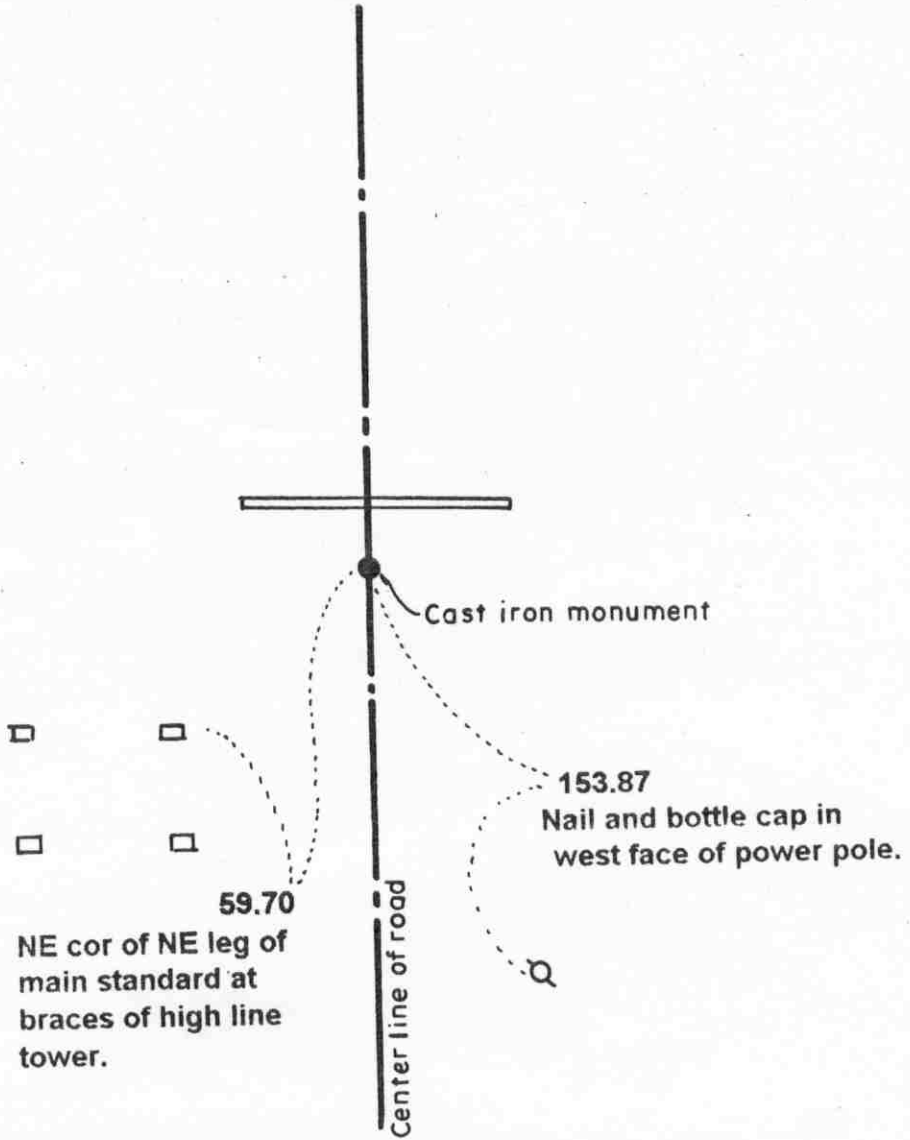
Certificate of Location of Government Corner

East Quarter corner, Section 36, Township 116 North, Range 28 West

SKETCH OF REFERENCE TIES (NO SCALE)

SECTION 36, T.116N., R.28W.

SECTION 31, T.116N., R.27W.



Statement of evidence relative to this corner location on sheet 2

I hereby certify that this document was prepared by me or under my direct supervision.

Willard Pellinen
Willard Pellinen
McLeod County Surveyor
License No. 9626.

Date Oct. 9, 1995

OFFICE OF THE COUNTY RECORDER
MCLEOD COUNTY, MINNESOTA

I hereby certify that this document was filed in this office at 9 o'clock A M. on the 13th day of October 19 95.

Carmen Estlin Mulder, County Recorder

By _____, Deputy.

Document No. 268604

Certificate of Location of Government Corner
East Quarter Corner, Section 36, Township 116 North, Range 28 West

1855. This corner was originally established by the General Land Office. John Ryan set a post, in a wet marsh, and marked an 18 inch oak and a 10 inch oak for bearing trees.

December, 1968. Dickman Knutson, county surveyor, excavated for the corner and found an iron pin.

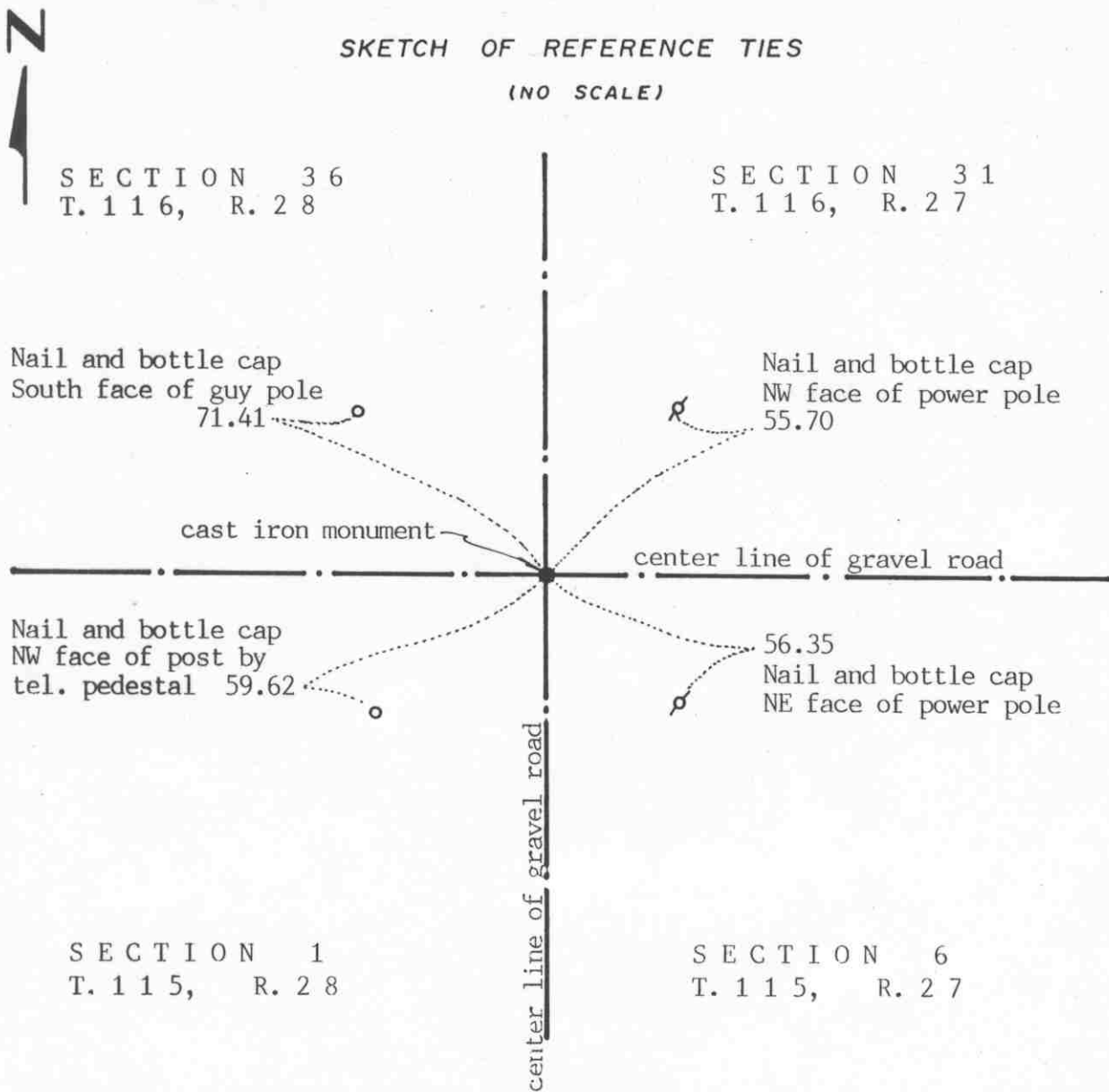
Knutson replaced the iron pin with a McLeod County cast iron monument and took reference ties.

July 28, 1987. We found the monument in good condition down 4 inches below the surface of the bituminous road and took new reference ties.

May 15, 1995. We checked the reference ties to the monument

Certificate of Location of Government Corner

SKETCH OF REFERENCE TIES
(NO SCALE)



Statement of evidence relative to this corner location on sheet 2

I hereby certify that this document was prepared by me or under my direct supervision.

Willard Pellinen

Willard Pellinen
McLeod County Surveyor
License No. 9626

Date Oct. 3, 1991

OFFICE OF THE COUNTY RECORDER
MCLEOD COUNTY, MINNESOTA.

I hereby certify that this document was filed in this office at 1 o'clock P.M. on the 21st day of Oct, 1991.

Carmen Hotliu, County Recorder

By _____, Deputy

Document No. 241584

NORTHEAST corner, Section 1, Township 115 North, Range 28 West

Certificate of Location of Government Corner

1855. John Ryan of the General Land Office set a post and marked 3 elms and an ironwood for bearing trees.

January, 1900. E.L.Higgins found an old stake 2 rods from a fence corner and put in a stone and a stake. He measured 2661 feet to the east quarter corner of Section 1.

December, 1968. McCombs Knutson Associates (Dickman Knutson, county surveyor) measured the east line of Section 1 and set a temporary corner at the center line intersection of the roads.

1969. Knutson dug for the corner but found nothing.

October 26, 1970. Knutson set a McLeod County cast iron monument at the center line intersection of the roads and took available reference ties.

November, 1990. We found the monument in good condition and measured 2661.05 feet to the east quarter corner compared with 2661 feet by Higgins. We took new reference ties.

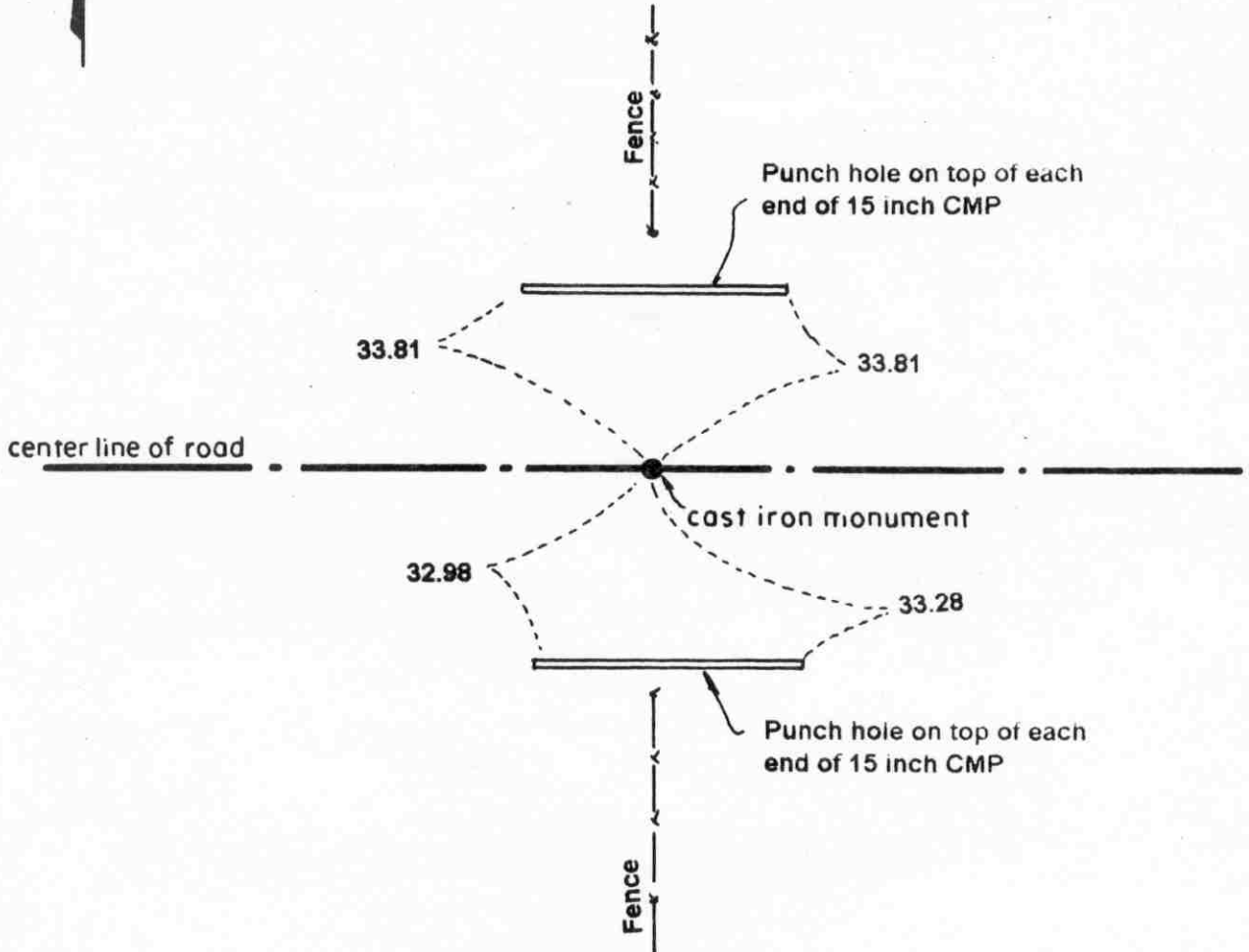
There being no evidence to the contrary, we accept the monument set by Knutson as marking the section corner. It is on old occupation lines, the center lines of the roads and the distance to the east quarter corner is the same as in 1900.

Certificate of Location of Government Corner

NORTH QUARTER corner, Section 6, Township 115 North, Range 27 West

SKETCH OF REFERENCE TIES (NO SCALE)

SECTION 31, T.116N., R. 27 W.



SECTION 6, T.115N., R. 27 W.

Statement of evidence relative to this corner location on sheet 2

I hereby certify that this document was prepared by me or under my direct supervision.

Willard Pellinen
Willard Pellinen
McLeod County Surveyor
License No. 9626.

Date Aug. 7, 1995

OFFICE OF THE COUNTY RECORDER
MCLEOD COUNTY, MINNESOTA

I hereby certify that this document was filed in this office at 9 o'clock A. M. on the 8th day of August 19 95.

GARREN OSTLIE MULDER, MCLEOD COUNTY RECORDER, County Recorder

By Phyllis Jopkowski, Deputy.

Document No. 267423

Certificate of Location of Government Corner
North Quarter Corner, Section 6, Township 115 North, Range 27 West

1855. John Ryan of the General Land Office established this corner. He set a post in a marsh and marked an 8 inch aspen and a 14 inch oak for bearing trees.

September 11, 1969. Dickman Knutson, county surveyor set a temporary corner on the center of the east-west road in line with fences north and south. This point has been accepted by adjoining land owners as the quarter corner.

April 16, 1970. Knutson dug for the corner (John Tupa from Hutchinson with a backhoe.) Down 1 1/2 feet below the surface of the road they found a wood stake. They took available reference ties.

1970. Knutson set a McLeod County cast iron monument at the corner.

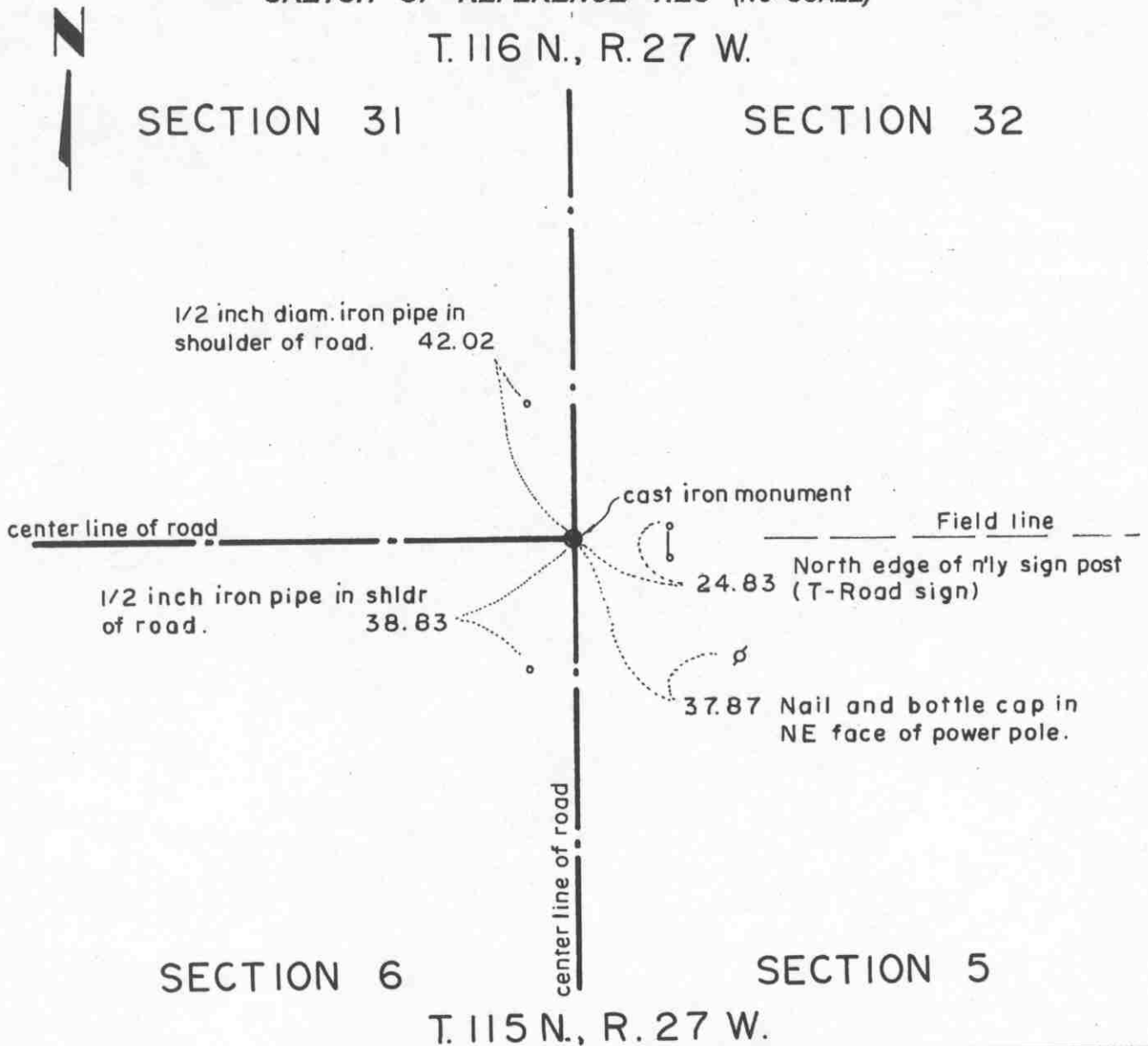
March 29, 1995. We found iron pipe down 6 inches below the surface of the gravel road. Pipe over cast iron monument. We took new available reference ties.

Certificate of Location of Government Corner

NORTHEAST corner, Section 6, Township 115 North, Range 27 West

SKETCH OF REFERENCE TIES (NO SCALE)

T. 116 N., R. 27 W.



Statement of evidence relative to this corner location on sheet 2

I hereby certify that this document was prepared by me or under my direct supervision.

Willard Pellinen
Willard Pellinen
McLeod County Surveyor
License No. 9626.

Date April 17, 1995

OFFICE OF THE COUNTY RECORDER
MCLEOD COUNTY, MINNESOTA

I hereby certify that this document was filed in this office at 9 o'clock A.M. on the 24th day of Apr 19 95.

Carmen Ostlie Mulder County Recorder

By _____, Deputy.

Document No. 265299

Certificate of Location of Government Corner
Northeast Corner, Section 6, Township 115 North, Range 27 West

1855. John Ryan of the General Land Office established this corner. He set a post and marked a 6 inch elm, a 7 inch aspen, a 12 inch oak and a 16 inch oak for bearing trees.

September, 1969. Dickman Knutson, county surveyor, found a stone and wood stake. He took reference ties and directly below the stone he found a 1 inch diameter solid iron pin. The iron was 3 feet below the surface of the road. He left the iron in place and set a McLeod County cast iron monument over it.

February 2, 1995. We found the monument in good condition down 6 inches below the surface of the gravel road and took new reference ties.

Certificate of Location of Government Corner

EAST QUARTER corner, Section 32, Township 116 North, Range 27 West

SKETCH OF REFERENCE TIES (NO SCALE)

SECTION 32

SECTION 33



Nail and bottle cap in
NE face of power pole

57.62

Nail and disc in east face
of power pole

263.52

center line of road

cast iron monument

200.73 Bolt hole at SW
leg of power line tower,
up 3 feet

Statement of evidence relative to this corner location on sheet 2

I hereby certify that this document
was prepared by me or under my
direct supervision.

Willard Pellinen
Willard Pellinen
McLeod County Surveyor
License No. 9626.

Date Jan. 4, 1995

OFFICE OF THE COUNTY RECORDER
MCLEOD COUNTY, MINNESOTA

I hereby certify that this document was filed in this office at 9
o'clock A. M. on the 10th day of January,
19 95.

Armen Estlie Mulder, County Recorder

By _____, Deputy.

Document No. 263640

***Certificate of Location of Government Corner
East Quarter Corner, Section 32, Township 116 North, Range 27 West***

November, 1856. E. N. Darling of the General Land Office established this corner. He set a post and marked a 6 inch and an 8 inch aspen for bearing trees.

No property lines east or west nor testimony to help re-establish this corner.

November 14, 1979. We set a railroad spike on line and split between the section corners and took available ties.

1980. We dug for the corner but found no evidence of the corner.

July 17, 1980. We set a McLeod County cast iron monument.

January 3, 1995. We took new reference ties to the monument.

Certificate of Location of Government Corner

NORTHEAST corner, Section 32, Township 116 North, Range 27 West

SKETCH OF REFERENCE TIES (NO SCALE)

SECTION 29

SECTION 28



Chiseled + on top of south end of conc. culvert.

118.76

79.98

Chiseled + on top of each end of concrete culvert.

cast iron monument

center line of road

Nail and bottle cap in SE face of power pole

41.83

76.04

center line of road

SECTION 32

SECTION 33

Statement of evidence relative to this corner location on sheet 2

I hereby certify that this document was prepared by me or under my direct supervision.

Willard Pellinen
Willard Pellinen
McLeod County Surveyor
License No. 9626.

Date Jan 4, 1995

OFFICE OF THE COUNTY RECORDER
MCLEOD COUNTY, MINNESOTA

I hereby certify that this document was filed in this office at 9 o'clock A M. on the 10th day of January, 1995.

Carmen Helie Mulder, County Recorder

By _____, Deputy.

Document No. 263639

Certificate of Location of Government Corner

Northeast Corner, Section 32, Township 116 North, Range 27 West

November, 1856. E. N. Darling of the General Land Office established this corner. He set a post and marked a 6 inch and an 8 inch aspen for bearing trees.

June 11, 1940. County Highway Engineer found a spike in a wood hub.

January 23, 1975. Minnesota Highway Department placed a 3/4 inch iron pin using 1941 ties and alignment notes received from county engineer.

July 29, 1975. Dickman Knutson, county surveyor, replaced the iron pin with a McLeod County cast iron monument and took available ties.

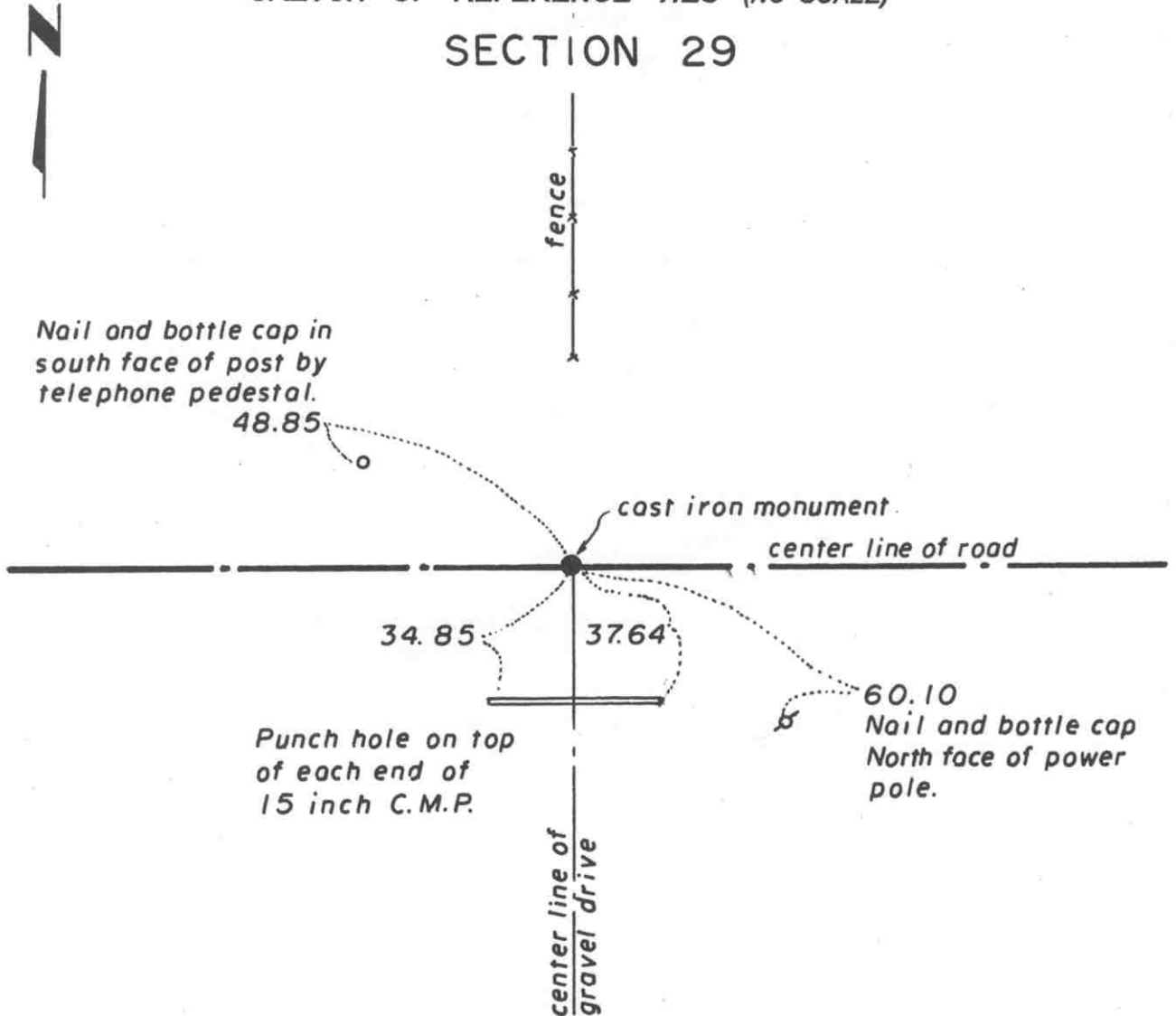
January 3, 1995. We found the monument in good condition and checked the reference ties.

Certificate of Location of Government Corner

NORTH QUARTER corner, Section 32, Township 116 North, Range 27 West

SKETCH OF REFERENCE TIES (NO SCALE)

SECTION 29



SECTION 32

Statement of evidence relative to this corner location on sheet 2

I hereby certify that this document was prepared by me or under my direct supervision.

Willard Pellinen
Willard Pellinen
McLeod County Surveyor
License No. 9626.

Date Feb. 4, 1995

OFFICE OF THE COUNTY RECORDER
MCLEOD COUNTY, MINNESOTA

I hereby certify that this document was filed in this office at 9 o'clock A. M. on the 6th day of February, 19 95.

Carmin Helwig Mulder, County Recorder

By _____, Deputy.

Document No. 264036

Certificate of Location of Government Corner

North Quarter Corner, Section 32, Township 116 North, Range 27 West

November, 1856. E. N. Darling of the General Land Office established this corner. He set a post and marked two 8 inch aspens for bearing trees.

February 5, 1982. We measured the north line of Section 32 and set a temporary quarter corner on the center line of the east-west road in line with a fence to the north and center line of a drive to the south.

July 16, 1982. Mr. Larry Michaletz , wo lives in the Southeast Quarter of Section 29, said fence running north has been accepted as the quarter line. Mr. Roy Lueck, 70 years old, and had lived in the Southwest Quarter of Section 29 all his life (his father owned the farm before him) said when he was 18 years old he saw a stone at the corner when the road was being rebuilt. It was in the center of the road, fence to the north.

July 26, 1982. We excavated for the corner, John Tupa from Hutchinson with a backhoe. We found a stone, 10 inches square, 18 inches long, set on end.

August 25, 1982. We set a McLeod County cast iron monument.

January 11, 1995. We found the monument in good condition down 6 inches below the surface of the road and took new reference ties.

Certificate of Location of Government Corner

North Quarter corner, Section 5, Township 115 North, Range 27 West

SKETCH OF REFERENCE TIES (NO SCALE)

SECTION 32, T. 116 N., R. 27 W.



Nail & bottle cap in south face of 24 inch elm.

Rock Pile

0.43

Nail & bottle cap in south face of 8 inch tree.

19.15

6±

Cast iron monument

Field line

SECTION 5, T. 115 N., R. 27 W.

Statement of evidence relative to this corner location on sheet 2

I hereby certify that this document was prepared by me or under my direct supervision.

Willard Pellinen

Willard Pellinen
McLeod County Surveyor
License No. 9626.

Date Nov. 6, 1995

OFFICE OF THE COUNTY RECORDER
MCLEOD COUNTY, MINNESOTA **269325**

I hereby certify that this document was filed in this office at 9 o'clock A M. on the 14th day of November 19 95.

Carmen Estlie M. Jelder County Recorder

By _____, Deputy.

Document No. _____

Certificate of Location of Government Corner

North Quarter Corner, Section 5, Township 115 North, Range 27 West

July, 1855. John Ryan of the General Land Office established this corner. He set a post and marked a 10 inch aspen and a 7 inch aspen for bearing trees.

1969, Adjoining land owners have accepted the intersection of field lines as the quarter corner.

September 12, 1969. Dickman Knutson, county surveyor, found a pointed stone at the intersection of field lines north, east and west. The stone was 5 inches in diameter and 14 inches long, pointed at the top.

Knutson replaced the stone with a McLeod County cast iron monument and took available reference ties.

February, 1995. The monument set by Knutson is accepted as marking the location of the government corner. It fits long standing occupation lines (the field lines) and it perpetuates the location of an older monument (the stone).

July 5, 1995. We found the monument in good condition and took new available reference ties.

Certificate of Location of Government Corner

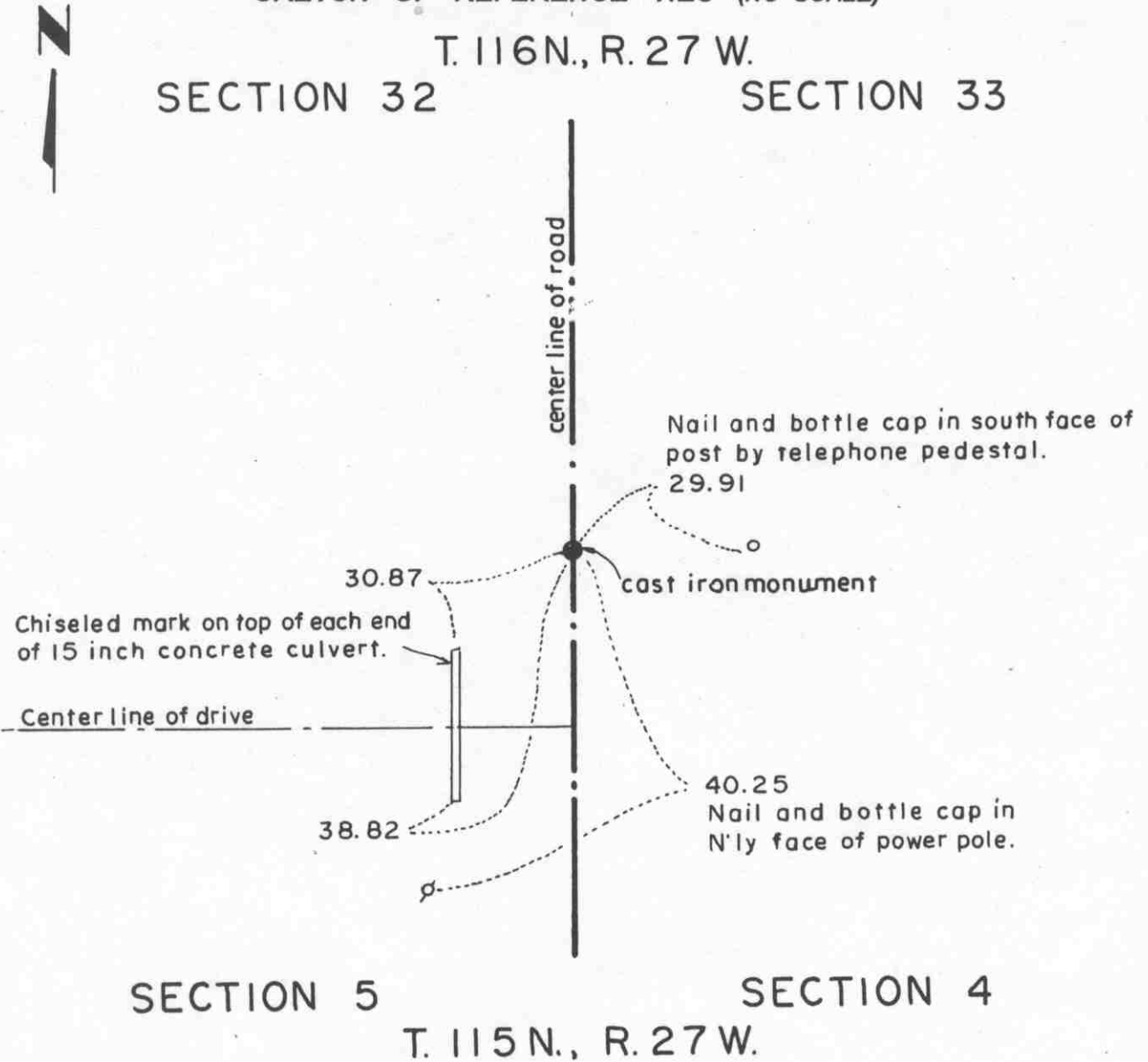
NORTHEAST corner, Section 5, Township 115 North, Range 27 West

SKETCH OF REFERENCE TIES (NO SCALE)

T. 116N., R. 27 W.

SECTION 32

SECTION 33



SECTION 5

SECTION 4

T. 115 N., R. 27 W.

Statement of evidence relative to this corner location on sheet 2

I hereby certify that this document was prepared by me or under my direct supervision.

Willard Pellinen

Willard Pellinen
McLeod County Surveyor
License No. 9626.

Date April 17, 1995

OFFICE OF THE COUNTY RECORDER
MCLEOD COUNTY, MINNESOTA

I hereby certify that this document was filed in this office at 9 o'clock A M. on the 24th day of Apr 19 95.

Carmen Estlie Mulder, County Recorder

By _____, Deputy.

Document No. 265298

Certificate of Location of Government Corner
Northeast Corner, Section 5, Township 115 North, Range 27 West

1855. John Ryan of the General Land Office established this corner. He set a post and marked 3 aspens and a cherry tree for bearing trees.

September 12, 1969. Dickman Knutson, county surveyor, set a temporary corner at location as per adjoining land owners.

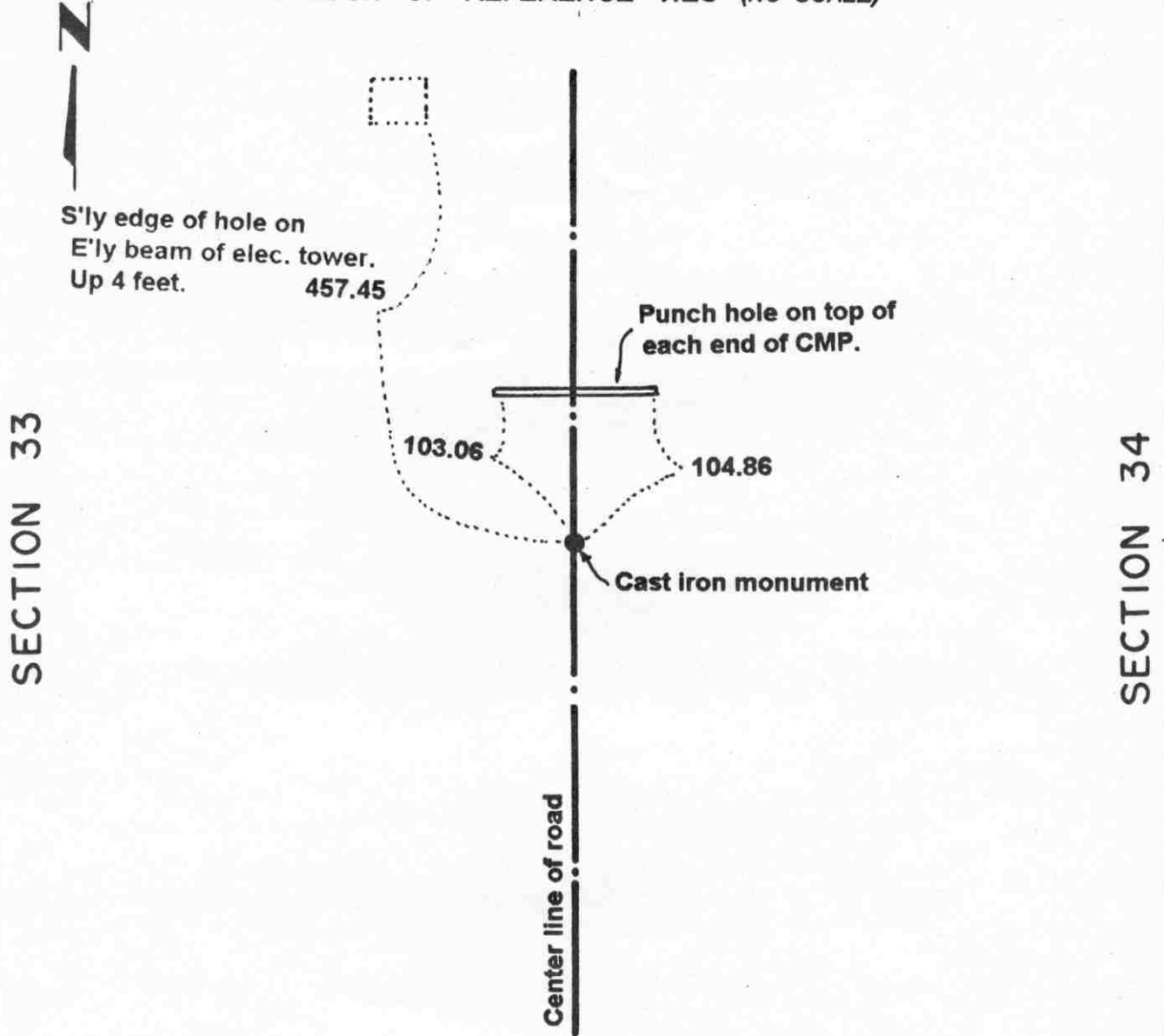
October, 1969. Knutson dug for the corner and found a stone down 2 feet and he took reference ties.

February 3, 1995. We checked the reference ties to the monument.

Certificate of Location of Government Corner

EAST QUARTER corner, Section 33, Township 116 North, Range 27 West

SKETCH OF REFERENCE TIES (NO SCALE)



Statement of evidence relative to this corner location on sheet 2

I hereby certify that this document was prepared by me or under my direct supervision.

Willard Pellinen
 Willard Pellinen
 McLeod County Surveyor
 License No. 9626.

Date OCT. 9, 1995

**OFFICE OF THE COUNTY RECORDER
 MCLEOD COUNTY, MINNESOTA**

I hereby certify that this document was filed in this office at 9 o'clock A. M. on the 13th day of October 19 95.

Carmen Estlie Mulder, County Recorder

By _____, Deputy.

Document No. 268596

Certificate of Location of Government Corner
East Quarter Corner, Section 33, Township 116 North, Range 27 West

November, 1856. E. N. Darling of the General Land Office established this corner. He set a post and marked a 5 inch and a 6 inch aspen for bearing trees.

No property lines east or west at this corner. No testimony to help re-establish this corner. We set a temporary quarter corner half way between the section corners on the center line of the north-south road. We dug for the corner, John Tupa from Hutchinson with a backhoe. Down below the road surface, in the original ground, we found a rotted wood post, round, 4 inches in diameter. We took available reference ties and set a McLeod County cast iron monument. This is withing a half foot of being half way between the section corners.

May 15, 1995. We checked the reference ties.

NORTHEAST corner, Section 33, Township 116 North, Range 27 West

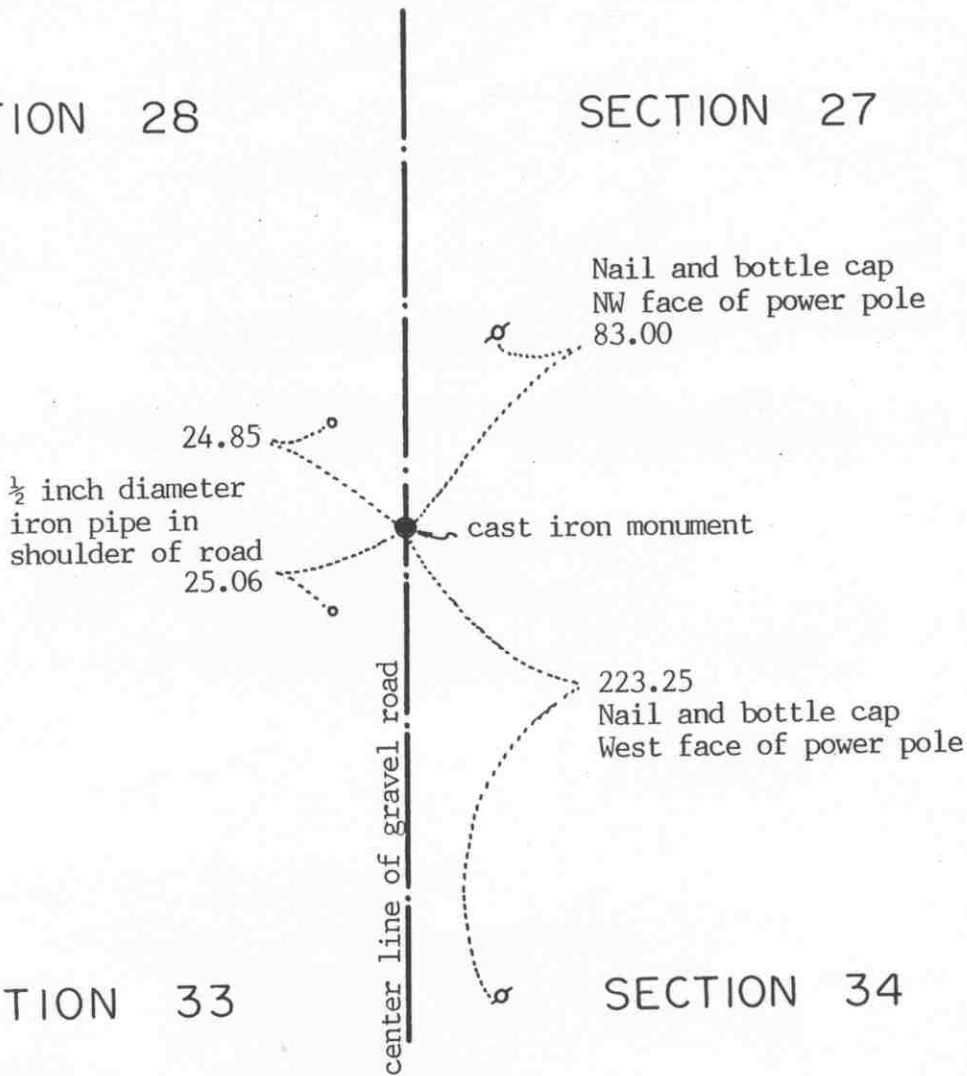
Certificate of Location of Government Corner

SKETCH OF REFERENCE TIES
(NO SCALE)



SECTION 28

SECTION 27



SECTION 33

SECTION 34

Statement of evidence relative to this corner location on sheet 2

I hereby certify that this document was prepared by me or under my direct supervision.

Willard Pellinen

Willard Pellinen
McLeod County Surveyor
License No. 9626

Date July 27, 1993

OFFICE OF THE COUNTY RECORDER
MCLEOD COUNTY, MINNESOTA.

I hereby certify that this document was filed in this office at 4 o'clock P.M. on the 5th day of August, 19 93.

Carmen Belle Mulder, County Recorder

By _____, Deputy

Document No. 253991

NORTHEAST corner, Section 33, Township 116 North, Range 27 West

Certificate of Location of Government Corner

November, 1856. E. N. Darling of the General Land Office established this corner. He set a post and marked 1 ash and 3 oaks for bearing trees.

August 20, 1975. McCombs Knutson Associates (Dickman Knutson, county surveyor) set a McLeod County cast iron monument over a found 6 inch by 4 inch stone. This stone was on the center line P.I. of the north-south road. No occupation lines east or west. This is within a foot of being half way between the east quarter corner of Section 28 and the east quarter corner of Section 33.

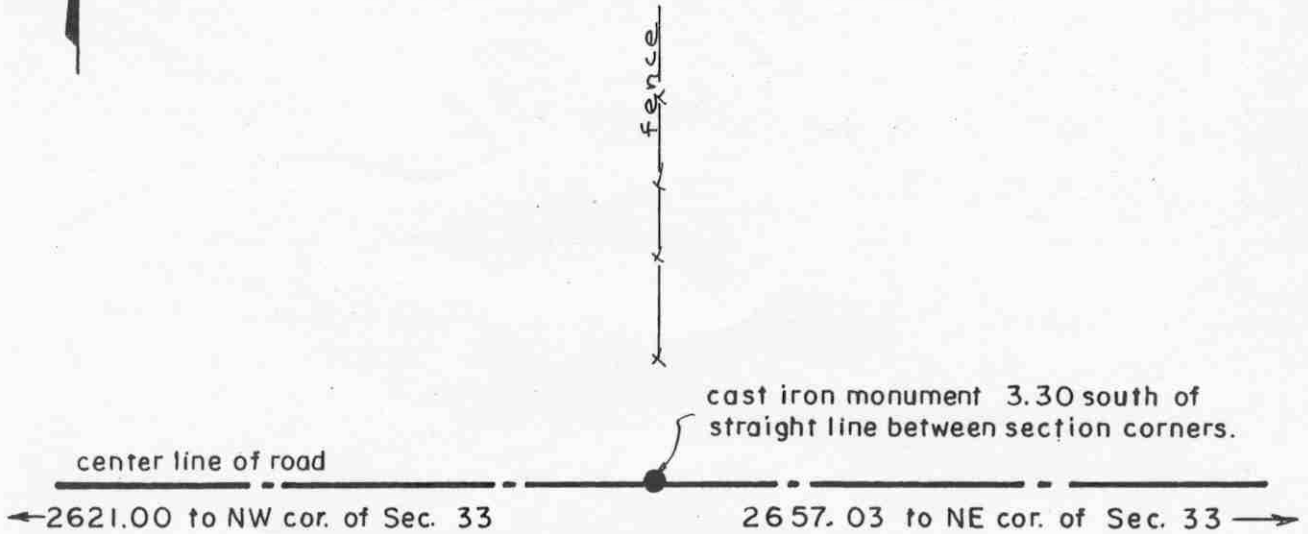
March 13, 1993. We found the monument in good condition down 6 inches below the surface of the road and took new reference ties.

Certificate of Location of Government Corner

NORTH QUARTER corner, Section 33, Township 116 North, Range 27 West

SKETCH OF REFERENCE TIES (NO SCALE)

SECTION 28



SECTION 33

Statement of evidence relative to this corner location on sheet 2

I hereby certify that this document was prepared by me or under my direct supervision.

Willard Pellinen
Willard Pellinen
McLeod County Surveyor
License No. 9626.

Date Jan. 4, 1995

OFFICE OF THE COUNTY RECORDER
MCLEOD COUNTY, MINNESOTA

I hereby certify that this document was filed in this office at 9 o'clock A. M. on the 10th day of January, 1995.

Carmen Helie Mulder County Recorder

By _____, Deputy.

Document No. 263641

Certificate of Location of Government Corner
North Quarter Corner, Section 33, Township 116 North, Range 27 West

November, 1856. E. N. Darling of the General Land Office established this corner. He set a post and marked 2 five inch aspens for bearing trees.

September 23, 1977. Dickman Knutson, county surveyor, excavated for the corner, John Tupa from Hutchinson with a backhoe. They found a stone down 1 1/2 feet below the surface of the road. Stone was 8 inches square on top, 12 inches high. Knutson left the stone in place and placed a half inch diameter iron pipe over the stone and took available reference ties.

June 14, 1979. We replaced the iron pipe with a McLeod County cast iron monument. We measured 2621.00 feet to the northwest corner and 2657.03 feet to the northeast corner of Section 33. We had an angle of 180 degrees 08 minutes 35 seconds at the corner, on the south side of the section line. We measured 5234.12 feet to the south quarter corner of Section 33.

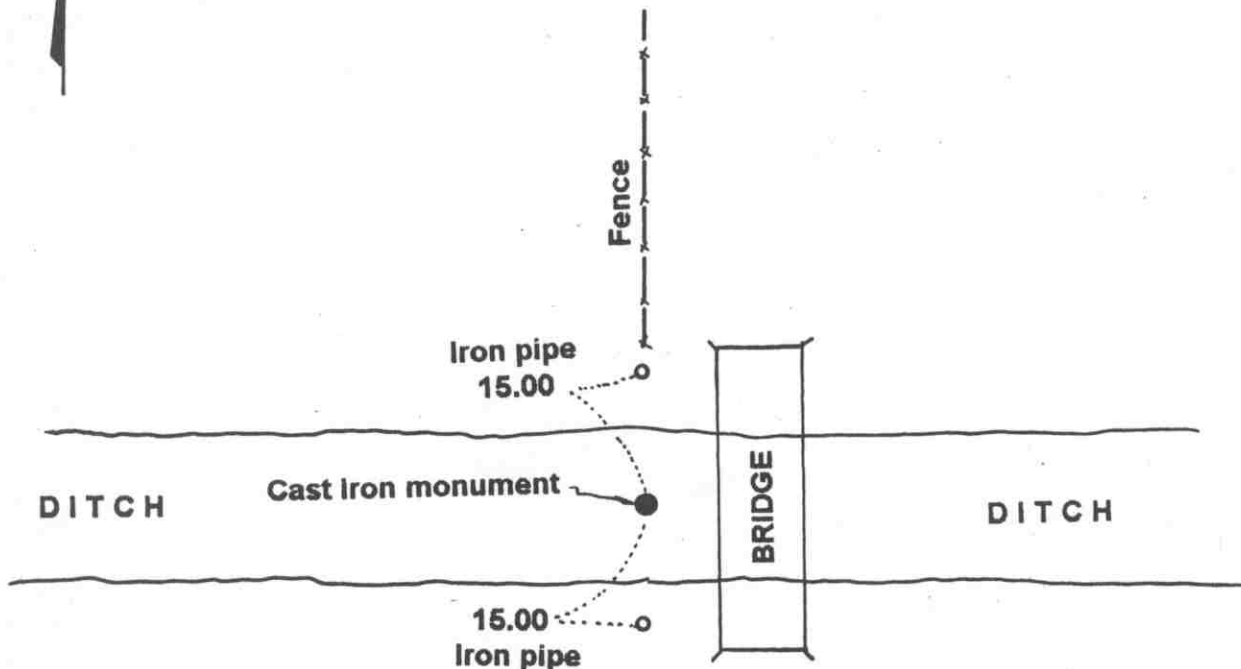
January 3, 1995. We checked the reference ties to the monument.

Certificate of Location of Government Corner

NORTH QUARTER corner, Section 4, Township 115 North, Range 27 West

SKETCH OF REFERENCE TIES (NO SCALE)

SECTION 33, T. 116 N., R. 27 W.



SECTION 4, T. 115 N., R. 27 W.

Statement of evidence relative to this corner location on sheet 2

I hereby certify that this document was prepared by me or under my direct supervision.

Willard Pellinen
Willard Pellinen
McLeod County Surveyor
License No. 9626.

Date June 9, 1995

OFFICE OF THE COUNTY RECORDER
MCLEOD COUNTY, MINNESOTA

I hereby certify that this document was filed in this office at 2 o'clock P. M. on the 13th day of June 19 95.

GARREN OSTLIE HILDFR, MCLEOD COUNTY RECORDER

County Recorder

By Phyllis Sopkowiak, Deputy.

Document No. 266252

Certificate of Location of Government Corner
North Quarter Corner, Section 4, Township 115 North, Range 27 West

1855. John Ryan of the General Land Office established this corner. He set a a post at the corner (at the west edge of a swamp) and marked an 8 inch and a 12 inch aspen for bearing trees.

September, 1969. Dickman Knutson, county surveyor, set a McLeod County cast iron monument in the center of a east-west ditch in line with a fence to the north. Mr. Elde, Mr. Kulmann and Mr. Engelman, area land owners, all stated this was the correct location of the government corner. Knutson took available reference ties.

March 29, 1995. We checked the reference ties.

Certificate of Location of Government Corner

NORTHEAST corner, Section 4, Township 115 North, Range 27 West

SKETCH OF REFERENCE TIES (NO SCALE)

T.116 N., R. 27 W.

SECTION 33

SECTION 34



Nail and bottle cap in
north face of power pole
26.91

Wood fence post
1.3

Cast iron monument

Field line

Fence

Fence

SECTION 4

SECTION 3

T.115 N., R. 27 W.

Statement of evidence relative to this corner location on sheet 2

I hereby certify that this document was prepared by me or under my direct supervision.

Willard Pellinen
Willard Pellinen
McLeod County Surveyor
License No. 9626.

Date June 9, 1995

OFFICE OF THE COUNTY RECORDER
MCLEOD COUNTY, MINNESOTA

I hereby certify that this document was filed in this office at 2 o'clock P.M. on the 13th day of June 19 95.

CARMEN OSTLE MILDFR., MCLEOD COUNTY RECORDER

County Recorder

By Phyllis Sopotowiak, Deputy.

Document No. 266251

Certificate of Location of Government Corner
Northeast Corner, Section 4, Township 115 North, Range 27 West

1855. John Ryan of the General Land Office established this corner. He set a post and marked two 10 inch aspens, an 8 inch aspen and a 7 inch aspen for bearing trees.

September, 1969. Dickman Knutson, county surveyor, set a McLeod County cast iron monument at the intersection of fences. Fences north, south and east. This has been accepted as the corner by adjoining land owners. Knutson took available reference ties.

March 29, 1995. We checked the reference ties.

Certificate of Location of Government Corner

EAST QUARTER corner, Section 34, Township 116 North, Range 27 West

SKETCH OF REFERENCE TIES (NO SCALE)



2627.25 feet to southeast corner of Sec. 34
 2634.47 feet to northeast corner of Sec. 34

SECTION 34

SECTION 35

Nail and bottle cap in north face of west tree of twin 16 inch tree.

Nail and bottle cap in west face of 10 inch tree.

46.77

2.30

0.50 steel fence post.

Fence

Cast iron monument

12.43

Nail and bottle cap in SE face of 12 inch tree.

36.79

Nail and bottle cap in NW face of 18 inch tree.

Fence

Statement of evidence relative to this corner location on sheet 2

I hereby certify that this document was prepared by me or under my direct supervision.

Willard Pellinen
 Willard Pellinen
 McLeod County Surveyor
 License No. 9626.

Date Dec 13, 1995

OFFICE OF THE COUNTY RECORDER
 MCLEOD COUNTY, MINNESOTA

I hereby certify that this document was filed in this office at 9 o'clock A.M. on the 9th day of January 19 96.

Carmen Ostlie Mudder, County Recorder

By Charleen Engelman, Deputy.

Document No. 270208

Certificate of Location of Government Corner
East Quarter Corner, Section 34, Township 116 North, Range 27 West

November, 1856. E. N. Darling of the General Land Office established this corner. He set a post and marked 2 five inch oaks for bearing trees.

August 20, 1975. Mr. August Schuete, 63 years old and had lived in the Southeast Quarter of Section 34 all his life, stated the fence corner, fences south and west is the quarter corner. Other adjoining land owners agree.

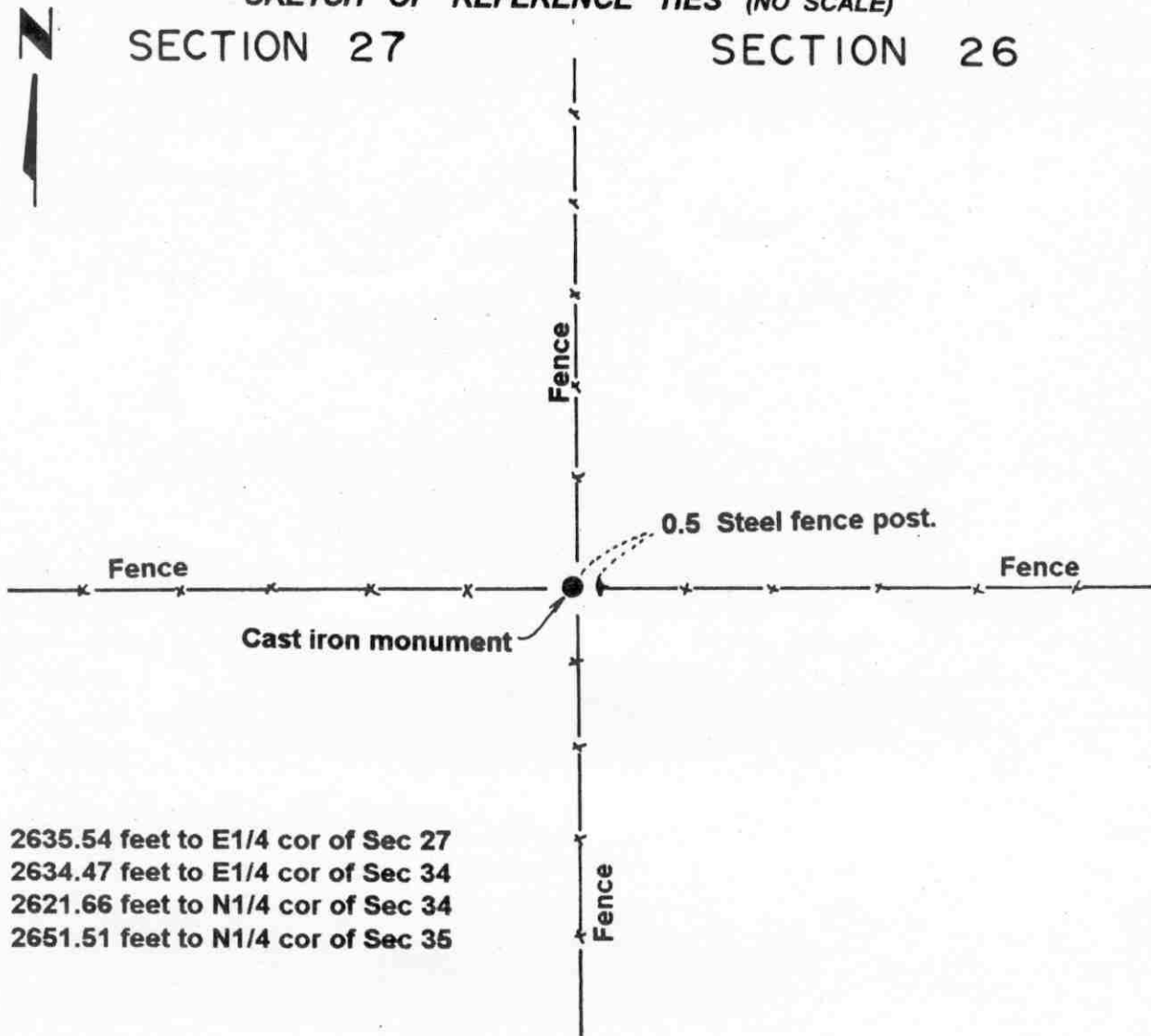
August 20, 1975. Dickman Knutson, county surveyor, set a McLeod County cast iron monument at the fence intersection and took available reference ties. This corner is within 3 1/2 foot of being half way between the section corners.

January, 1995. The monument set by Knutson is accepted as marking the location of the government corner. It fits long standing occupation lines (the fences) which have been accepted by adjoining land owners as being along the section and quarter section lines.

Certificate of Location of Government Corner

NORTHEAST corner, Section 34, Township 116 North, Range 27 West

SKETCH OF REFERENCE TIES (NO SCALE)



2635.54 feet to E1/4 cor of Sec 27
 2634.47 feet to E1/4 cor of Sec 34
 2621.66 feet to N1/4 cor of Sec 34
 2651.51 feet to N1/4 cor of Sec 35

SECTION 34 SECTION 35

Statement of evidence relative to this corner location on sheet 2

I hereby certify that this document was prepared by me or under my direct supervision.

Willard Pellinen
 Willard Pellinen
 McLeod County Surveyor
 License No. 9626.

Date Dec. 13, 1995

OFFICE OF THE COUNTY RECORDER
 MCLEOD COUNTY, MINNESOTA

I hereby certify that this document was filed in this office at 9 o'clock A. M. on the 9th day of January, 19 96.

Carmen Estlie Muller, County Recorder

By Charleen Engelmann, Deputy.

Document No. 270207

Certificate of Location of Government Corner
Northeast Corner, Section 34, Township 116 North, Range 27 West

November, 1856. E. N. Darling of the General Land Office established this corner. He set a post and marked an aspen, an elm and 2 oaks for bearing trees.

1975. Adjoining land owners all agree the fence intersection, fences north, south, east and west, is the section corner.

August 20, 1975. Dickman Knutson, county surveyor, set a McLeod County cast iron monument at the fence intersection and took available reference ties.

We measured 2634.47 feet to the east quarter corner of Section 34. We measured 2651.51 feet to the north quarter corner of Section 35 and we measured 2635.54 feet to the east quarter corner of Section 27.

January, 1995. The monument set by Knutson is accepted as marking the location of the government corner. It fits long standing occupation lines (the fences) which have been accepted by adjoining land owners as being along the section and quarter section lines.

NORTH QUARTER corner, Section 34, Township 116 North, Range 27 West

Certificate of Location of Government Corner

SKETCH OF REFERENCE TIES
(NO SCALE)



SECTION 27



2629.41 feet to NW corner
of Section 34

2621.66 feet to NE corner
of Section 34

2624.58 feet to center of
Section 27

cast iron monument

Angle on north side of
quarter corner, turned
from northwest corner
to northeast corner
is 180° 23' 13"

SECTION 34

Statement of evidence relative to this corner location on sheet 2

I hereby certify that this document
was prepared by me or under my
direct supervision.

Willard Pellinen

Willard Pellinen
McLeod County Surveyor
License No. 9626

Date July 26, 1993

OFFICE OF THE COUNTY RECORDER
MCLEOD COUNTY, MINNESOTA.

I hereby certify that this document was filed in this
office at 4 o'clock P. M. on the 5th day
of August, 1993.

Carmen Estelle Quader, County Recorder

By _____, Deputy

Document No. 253992

NORTH QUARTER corner, Section 34, Township 116 North, Range 27 West

Certificate of Location of Government Corner

November, 1856. E.N.Darling of the General Land Office established this corner. He set a post and marked a 14 inch and a 10 inch elm for bearing trees.

August, 1975. Dickman Knutson, county surveyor, found a rusted iron pipe along the north-south fence line which has been accepted as the north-south quarter line of Sections 34 and 27. Knutson replaced the iron pipe with a McLeod County cast iron monument.

This falls 8.88 feet north and 3.87 feet east of a lost position for the corner.

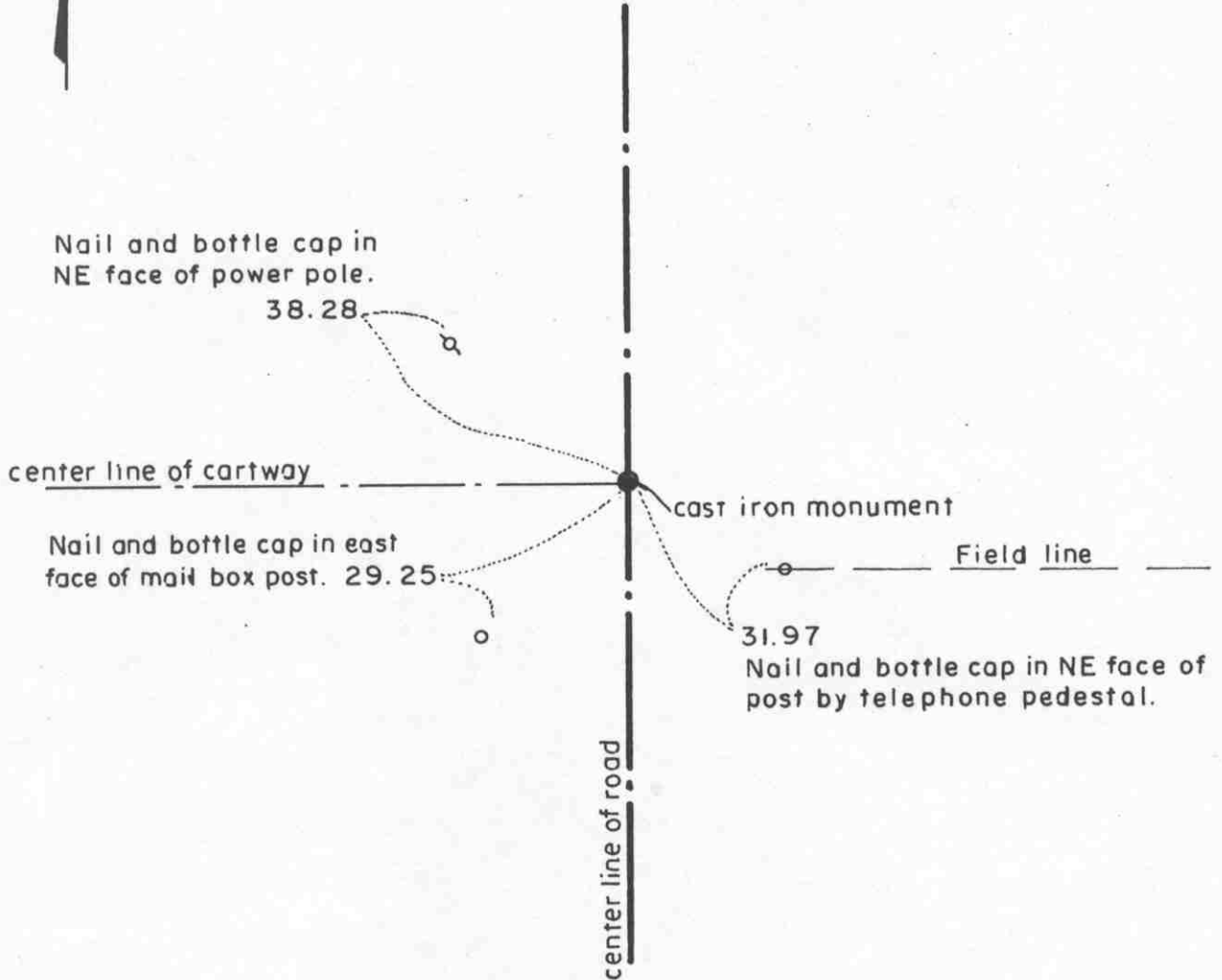
March 9, 1993. We found the monument in good condition under the north-south fence. No available reference ties.

Certificate of Location of Government Corner

NORTH QUARTER corner, Section 3, Township 115 North, Range 27 West

SKETCH OF REFERENCE TIES (NO SCALE)

SECTION 34, T.116 N., R.27 W.



SECTION 3, T.115 N., R.27 W.

Statement of evidence relative to this corner location on sheet 2

I hereby certify that this document was prepared by me or under my direct supervision.

Willard Pellinen
Willard Pellinen
McLeod County Surveyor
License No. 9626.

Date April 17, 1995

OFFICE OF THE COUNTY RECORDER
MCLEOD COUNTY, MINNESOTA

I hereby certify that this document was filed in this office at 9 o'clock A.M. on the 24th day of Apr 19 95.

Carmen Ostlie Mulder County Recorder

By _____, Deputy.

Document No. 265297

Certificate of Location of Government Corner
North Quarter Corner, Section 3, Township 115 North, Range 27 West

1855. John Ryan of the General Land Office established this corner. He set a post and marked two 10 inch oaks for bearing trees.

September, 1969. Dickman Knutson, county surveyor, found an iron pipe at the center line intersection of a north-south road and a cartway to the west. This point has been accepted by adjoining land owners as the quarter corner. Knutson replaced the iron pipe with a McLeod County cast iron monument and took reference ties.

February 2, 1995. We found the monument in good condition down 8 inches below the surface of the gravel road and took new ties.

Certificate of Location of Government Corner

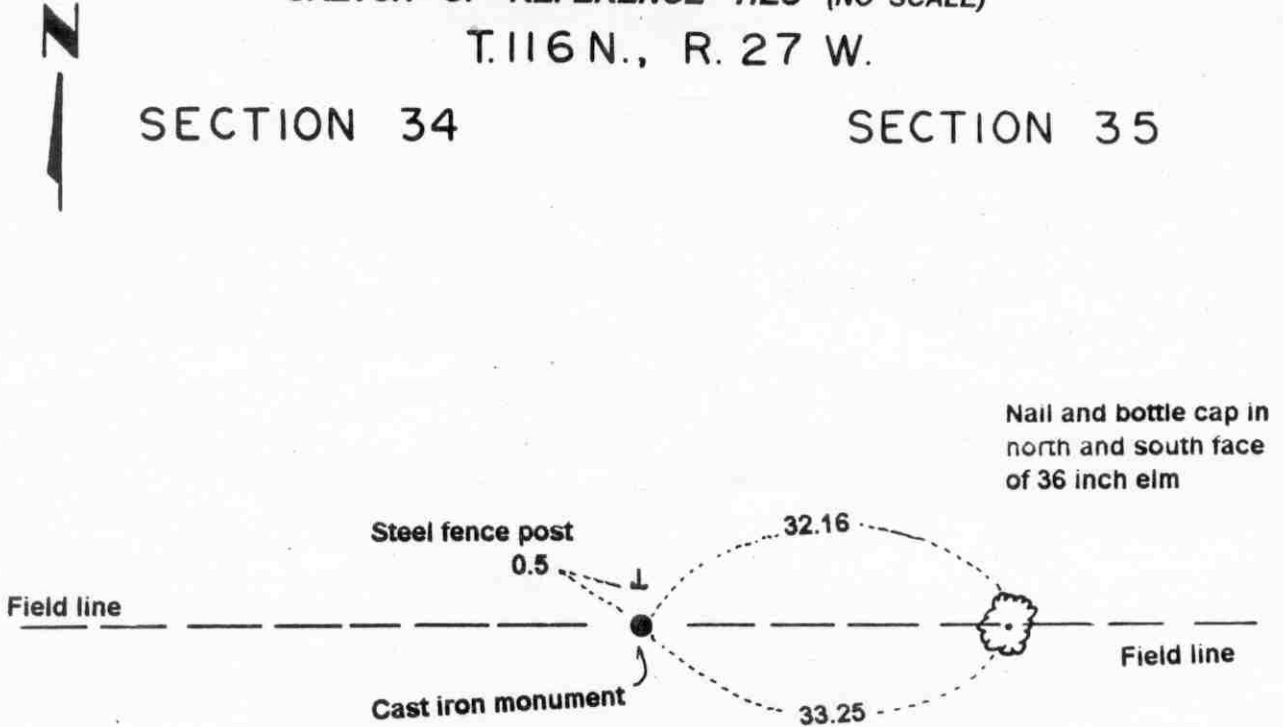
NORTHEAST corner, Section 3, Township 115 North, Range 27 West

SKETCH OF REFERENCE TIES (NO SCALE)

T. 116 N., R. 27 W.

SECTION 34

SECTION 35



SECTION 3

SECTION 2

T. 115 N., R. 27 W.

Statement of evidence relative to this corner location on sheet 2

I hereby certify that this document was prepared by me or under my direct supervision.

Willard Pellinen
Willard Pellinen
McLeod County Surveyor
License No. 9626.

Date Sept. 7, 1995

OFFICE OF THE COUNTY RECORDER
MCLEOD COUNTY, MINNESOTA

I hereby certify that this document was filed in this office at 9 o'clock A. M. on the 14th day of Sept 19 95.

Carmen Ostlie Muder, County Recorder

By _____, Deputy.

Document No. 268046

Certificate of Location of Government Corner
Northeast Corner, Section 3, Township 115 North, Range 27 West

1855. John Ryan of the General Land Office established this corner. He set a a post and marked 2 six inch aspens, a 12 inch linden and a 10 inch oak for bearing trees.

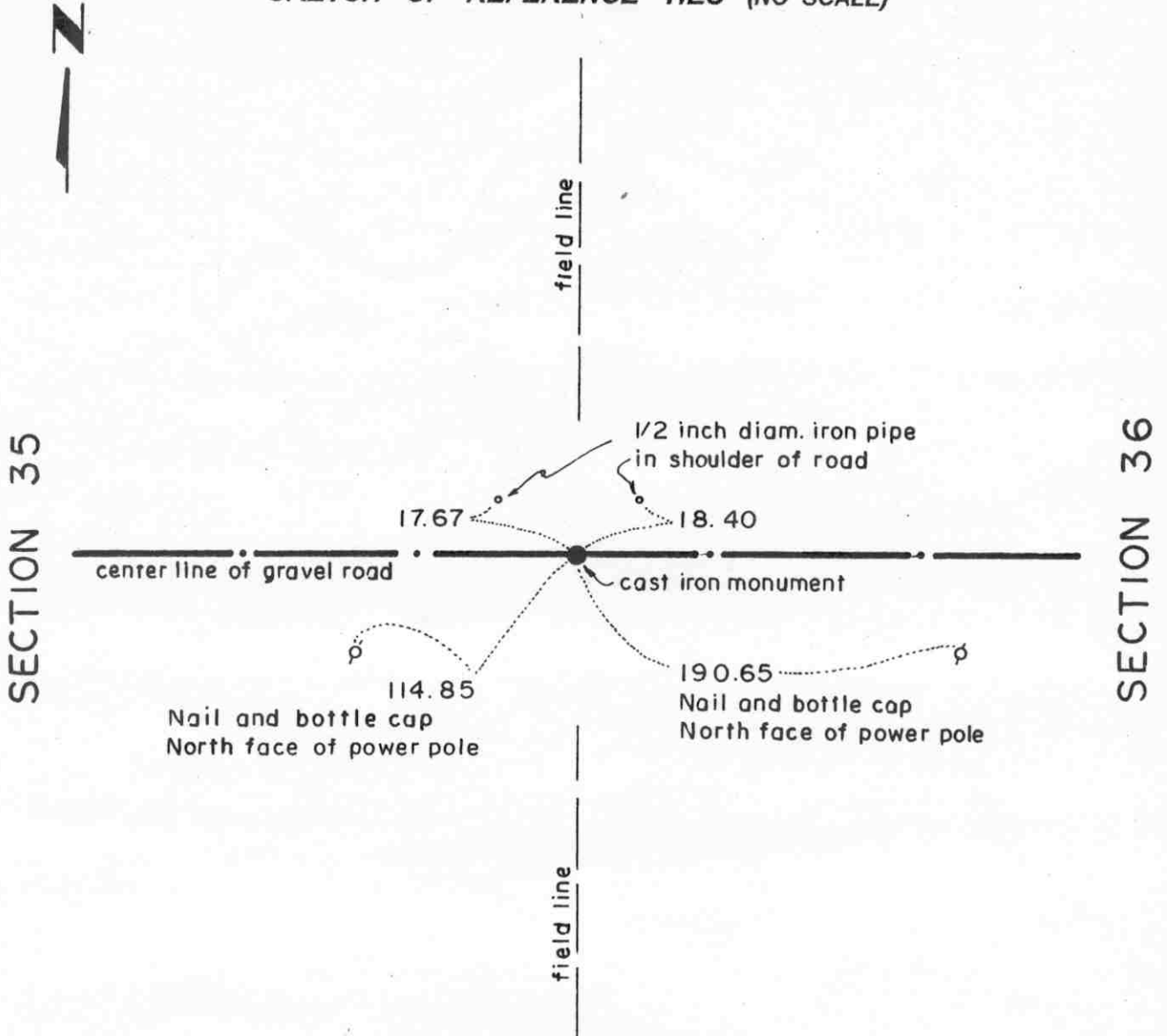
1969. Dickman Knutson, county surveyor, found a 1 1/2 inch diameter iron pipe and took available reference ties. This was within 1/2 foot of 1940 distance to the north quarter corner of Section 2 and within 1/2 foot of 1940 distance to a found iron pipe a quarter mile east.

April 10, 1995. We found the monument in good condition down 3 inches below the surface and took new available ties.

Certificate of Location of Government Corner

EAST QUARTER corner, Section 35, Township 116 North, Range 27 West

SKETCH OF REFERENCE TIES (NO SCALE)



Statement of evidence relative to this corner location on sheet 2

I hereby certify that this document was prepared by me or under my direct supervision.

Willard Pellinen
 Willard Pellinen
 McLeod County Surveyor
 License No. 9626.

Date Sept. 7, 1994

**OFFICE OF THE COUNTY RECORDER
 MCLEOD COUNTY, MINNESOTA**

I hereby certify that this document was filed in this office at 9 o'clock A. M. on the 22nd day of September 19 94.

Carmen O'Brien Mulder, County Recorder

By _____, Deputy.

Document No. 261946

Certificate of Location of Government Corner

East Quarter Corner, Section 35, Township 116 North, Range 27 West

November, 1856. E. N. Darling of the General Land Office originally established this corner. He set a post and marked a 10 inch oak and a 30 inch linden for bearing trees.

July 27, 1982. We excavated for the corner, John Tupa from Hutchinson with a backhoe. Down 6 inches below the road surface we found a 6 inch spike and a bottle cap. Directly below the spike, down 2 1/2 feet below the road surface, we found an old rotted wood stake. We took available reference ties.

August 26, 1982. Mr. Orville Hoerneman, who was 60 years old and had lived on farm in East Half of Section 35 all his life, said the center line of the road and the field lines running north and south have always been accepted as being on the quarter lines and on the section lines of Section 35 and Section 36. The stake we found was on the center line of the east-west road, in line with the field lines running north and south.

August 26, 1982. We set a McLeod County cast iron monument at the corner.

This corner is 1.33 feet south of a split between the section corners and 7.61 feet west of a straight line between the section corners.

August 23, 1994. We found the monument in good condition down 8 inches below the surface of the gravel road and took new reference ties.

Certificate of Location of Government Corner

NORTHEAST corner, Section 35, Township 116 North, Range 27 West

SKETCH OF REFERENCE TIES (NO SCALE)



SECTION 26

SECTION 25

2636.82 feet to E1/4
corner of Section 26

Field line



1/2 inch iron pipe at east
base of 26 inch elm.

2634.16 feet to N1/4
corner of Section 35

2633.83 feet to E1/4
corner of Section 35

Field line

SECTION 35

SECTION 36

Statement of evidence relative to this corner location on sheet 2

I hereby certify that this document
was prepared by me or under my
direct supervision.

Willard Pellinen
Willard Pellinen
McLeod County Surveyor
License No. 9626.

Date April 20, 1995

OFFICE OF THE COUNTY RECORDER MCLEOD COUNTY, MINNESOTA

I hereby certify that this document was filed in this office at 9
o'clock A M. on the 24th day of Apr
19 95.

Armen Asthian, County Recorder

By _____, Deputy.

Document No. 265325

Certificate of Location of Government Corner
Northeast Corner, Section 35, Township 116 North, Range 27 West

November, 1856. E. N. Darling of the General Land Office established this corner. He set a post and marked a 10 inch oak, 2 six inch aspens and a 10 inch ash for bearing trees.

October 8, 1985. Mr. Orville Hoernemann, who had lived in the East Half of Section 35 all his life, and his father before him, said the field lines are in the same location as they have been as long as he can remember. He didn't know of any "marker" at the corner but it should be very near to a large tree. Mr. Hoernemann was 63 years old. Other adjoining land owners agree. We set an iron pipe at the corner and measured 2634.16 feet to the north quarter corner and 2633.83 feet to the east quarter corner of Section 35. We measured 2636.82 feet to the east quarter corner of Section 26.

February 2, 1995. We found the iron pipe at the east base of a 26 inch elm.

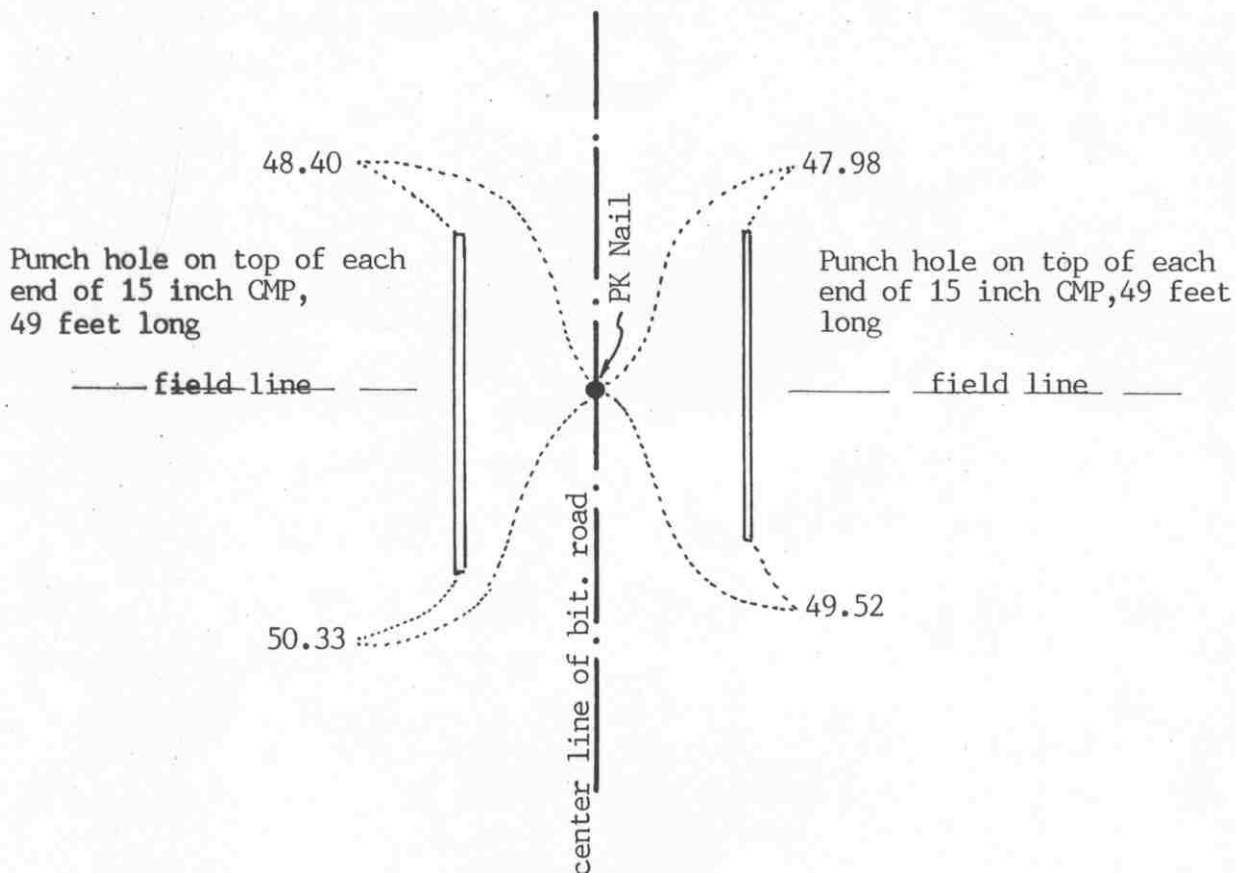
Certificate of Location of Government Corner



SKETCH OF REFERENCE TIES

(NO SCALE)

SECTION 26



SECTION 35

Statement of evidence relative to this corner location on sheet 2

I hereby certify that this document was prepared by me or under my direct supervision.

Willard Pellinen

Willard Pellinen
McLeod County Surveyor
License No. 9626

Date August 10, 1992

OFFICE OF THE COUNTY RECORDER
MCLEOD COUNTY, MINNESOTA.

I hereby certify that this document was filed in this office at 9 o'clock A.M. on the 20th day of Aug, 1992.

Carmen Oltie, County Recorder

By _____, Deputy

Document No. 247340

Certificate of Location of Government Corner

November 1856. E. N. Darling set a post and marked an elm and a linden tree for bearing trees.

1924. The county highway department measured 5266 feet between the north and south quarter corners of section 35.

1975. We found a large spike down $1\frac{1}{2}$ feet below the surface of the road. We tied it off and dug below but found nothing else.

January 7, 1981. We measured the north south quarter line and had 5265.82 feet compared with 5266 feet by the highway department in 1924. Mr. Wilbert Stuedemann, 69 years old, in the southeast quarter of Section 26 all his life said this is the correct corner. (the center line of the road, field lines east and west)

August 11, 1981. We set a $\frac{1}{2}$ inch diameter iron pipe at the corner and took additional reference ties.

May 23, 1990. All the old ties and the quarter corner will be destroyed by road construction. We took new ties.

December 31, 1991. We reset the corner, a PK Nail and took new reference ties.

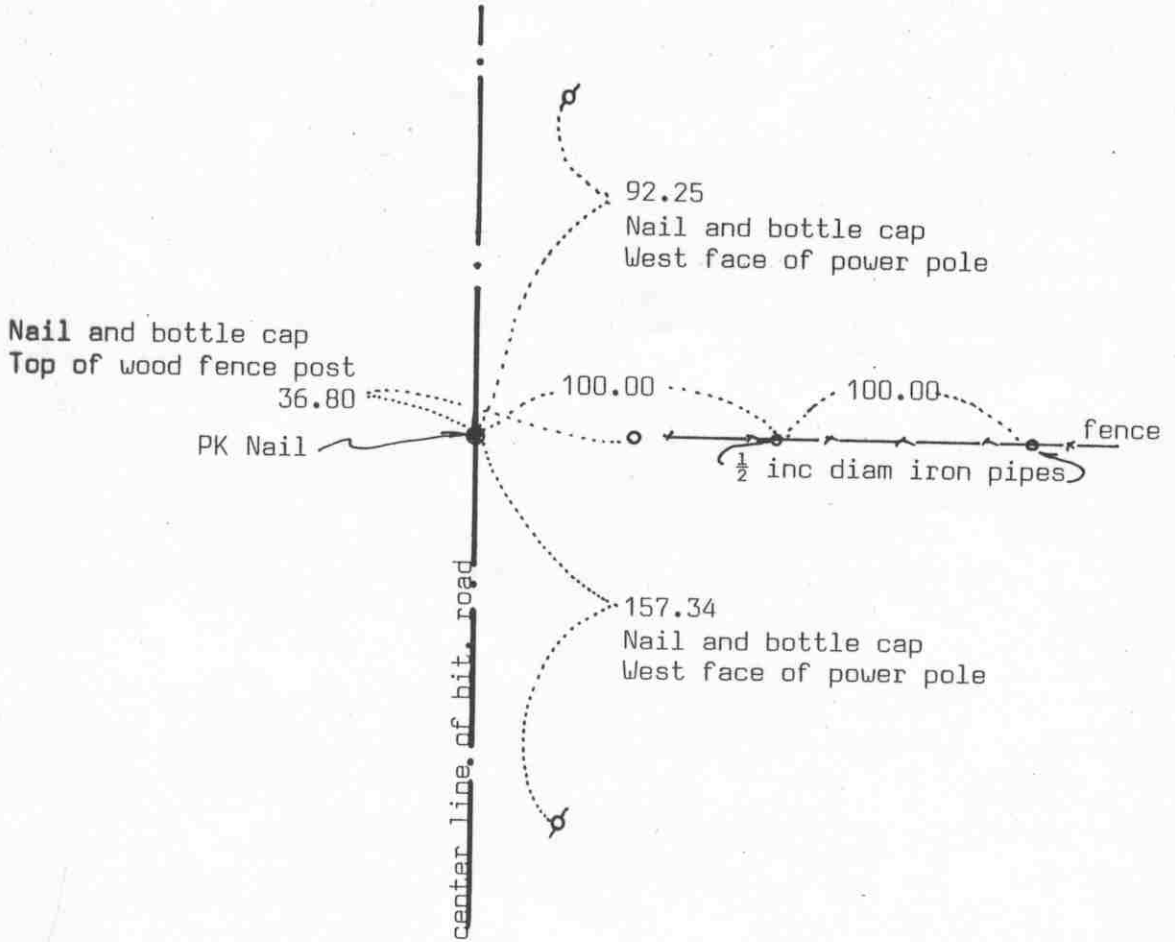
We accept the spike we found in 1975 as having perpetuated the correct location of the quarter corner. It fits occupation lines, the center line of the road and the field lines east and west.

Certificate of Location of Government Corner



SKETCH OF REFERENCE TIES (NO SCALE)

SECTION 35 T 116 R 27



SECTION 2 T 115 R 27

Statement of evidence relative to this corner location on sheet 2

I hereby certify that this document was prepared by me or under my direct supervision.

Willard Pellinen
Willard Pellinen
McLeod County Surveyor
License No. 9626

Date August 17, 1992

OFFICE OF THE COUNTY RECORDER
MCLEOD COUNTY, MINNESOTA.

I hereby certify that this document was filed in this office at 9 o'clock A.M. on the 20th day of Aug, 1992.

Sarmin O'Brien, County Recorder

By _____, Deputy

Document No. 247332

Certificate of Location of Government Corner

July, 1855. John Ryan of the General Land Office set a post and marked an oak and an aspen for bearing trees.

1940. E. L. Higgins, county surveyor, set a steel corner. He measured 2647.6 to the northwest corner of Section 2. He set the corner along the center line of the north-south road in line with fences east and west.

September 15, 1969. McCombs Knutson Associates (Dickman Knutson, county surveyor, set a McLeod County cast iron monument at the center line of the road in line with fences east and west. Adjoining property owners agree this is the correct location of the corner.

April 27, 1983. We reset the corner, old corner had been disturbed by road construction. We took new reference ties. We set a PK nail at the corner.

August 15, 1983. We reset a McLeod County cast iron monument at the corner.

May 24, 1990. We took extra reference ties, iron pipes 100.00 and 200.00 feet east of the corner along the north line of the Northeast Quarter of Section 2. Old ties to be destroyed by road construction.

December 31, 1991. We reset the corner, a PK nail, using the 1990 ties and took additional ties.

We accept the monument set by Knutson as marking the correct location of the quarter corner. The center line of the road and the fences had perpetuated the location of the corner.

This corner is within 2 feet of being on a split between the section corners and within $1\frac{1}{2}$ feet of being on a straight line between the corners.

We measured 5265.82 feet to the north quarter corner of Section 35, compared with a distance of 5266 feet by the county highway department in 1924.

Certificate of Location of Government Corner

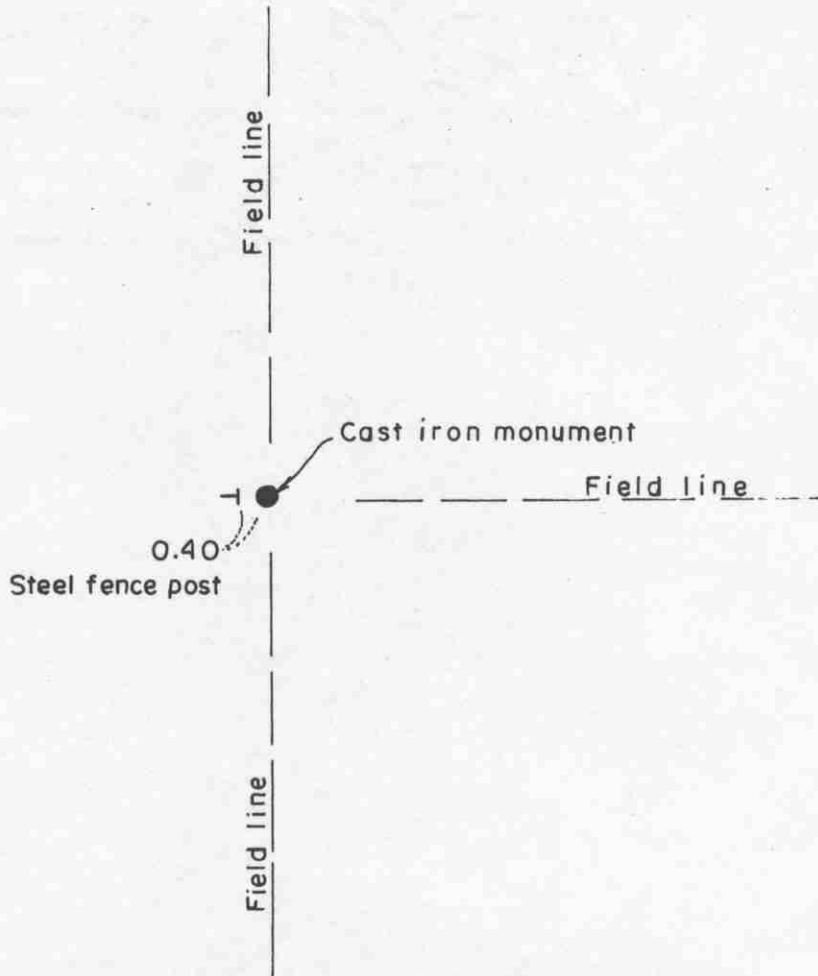
NORTHEAST corner, Section 2, Township 115 North, Range 27 West

SKETCH OF REFERENCE TIES (NO SCALE)

T.116 N., R.27 W.

SECTION 35

SECTION 36



SECTION 2

SECTION 1

T.115 N., R.27 W.

Statement of evidence relative to this corner location on sheet 2

I hereby certify that this document was prepared by me or under my direct supervision.

Willard Pellinen
Willard Pellinen
McLeod County Surveyor
License No. 9626.

Date April 17, 1995

OFFICE OF THE COUNTY RECORDER
MCLEOD COUNTY, MINNESOTA

I hereby certify that this document was filed in this office at 9 o'clock A. M. on the 24th day of Apr 19 95.

Carmen Estlin Gulder County Recorder

By _____, Deputy.

Document No. 265295

Certificate of Location of Government Corner
Northeast Corner, Section 2, Township 115 North, Range 27 West

1855. John Ryan of the General Land Office established this corner. He set a post and marked a 10 inch oak, a 12 inch oak, a 20 inch elm and a 5 inch aspen for bearing trees.

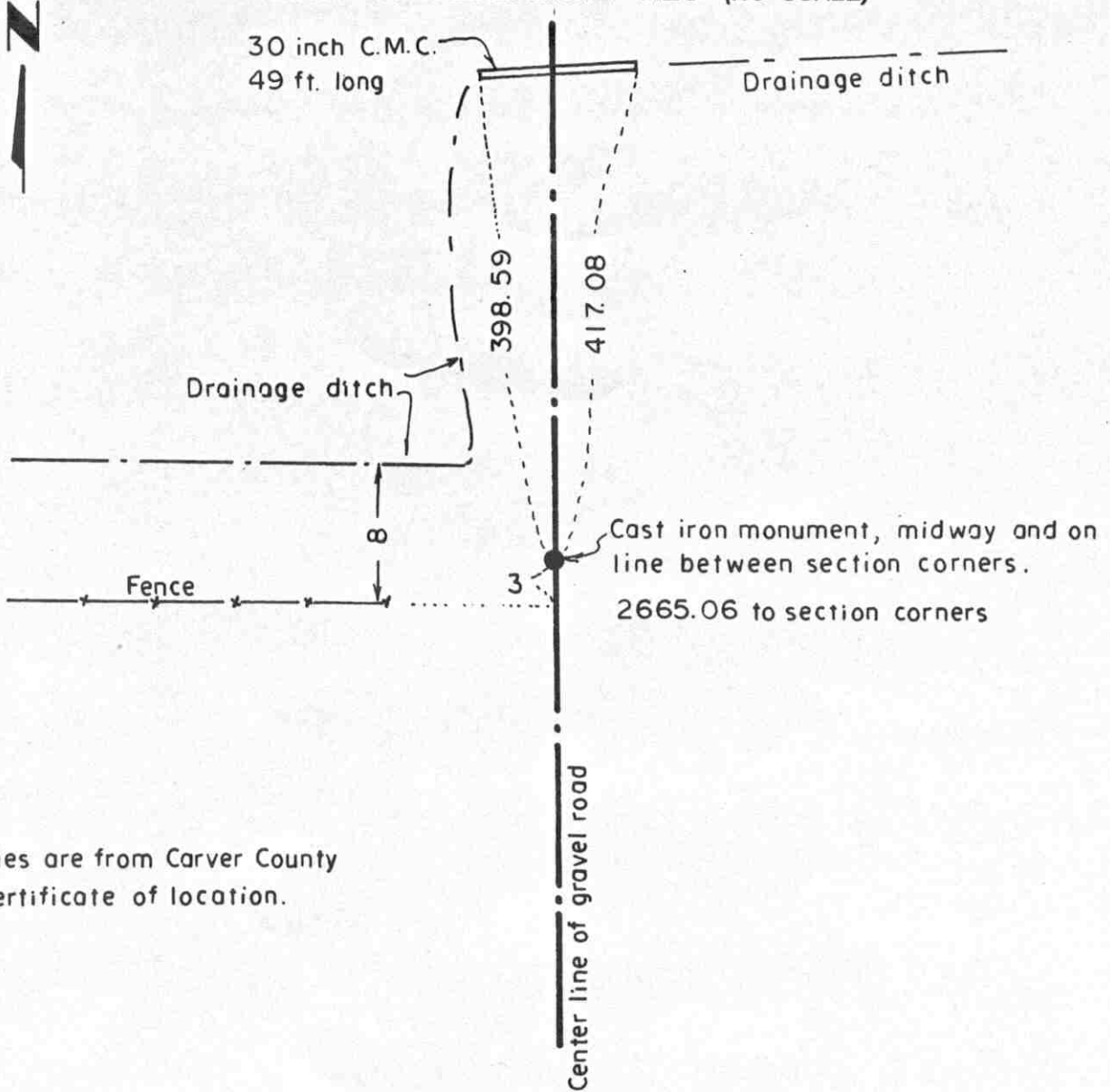
1969. Dickman Knutson, county surveyor, set a McLeod County cast iron monument in the middle of a rock pile which adjoining land owners have accepted as being the section corner.

February 2, 1995. We found the monument in good condition in the middle of the rock pile, 0.4 feet east of a steel fence post.

Certificate of Location of Government Corner

East Quarter corner, Section 36, Township 116 North, Range 27 West

SKETCH OF REFERENCE TIES (NO SCALE)



Ties are from Carver County certificate of location.

Statement of evidence relative to this corner location on sheet 2

I hereby certify that this document was prepared by me or under my direct supervision.

Willard Pellinen
Willard Pellinen
McLeod County Surveyor
License No. 9626.

Date Dec. 13, 1995

OFFICE OF THE COUNTY RECORDER MCLEOD COUNTY, MINNESOTA

I hereby certify that this document was filed in this office at 9 o'clock A. M. on the 9th day of January 19 96.

Carmen Estelle Mueller County Recorder

By Charleen Engelman, Deputy.

Document No. 270209

Certificate of Location of Government Corner
East quarter corner, Section 36, Township 116 North, Range 27 West

1855. John Ryan of the General Land Office originally established this corner.

1892. T.F. Kiernan either found or placed this corner midway between the section corners.

July, 1971. The Carver County Surveyor excavated for the corner at the center of the north-south road in line with a fence to the west. He found an egg-shaped field stone 28 inches by 18 inches by 24 inches.

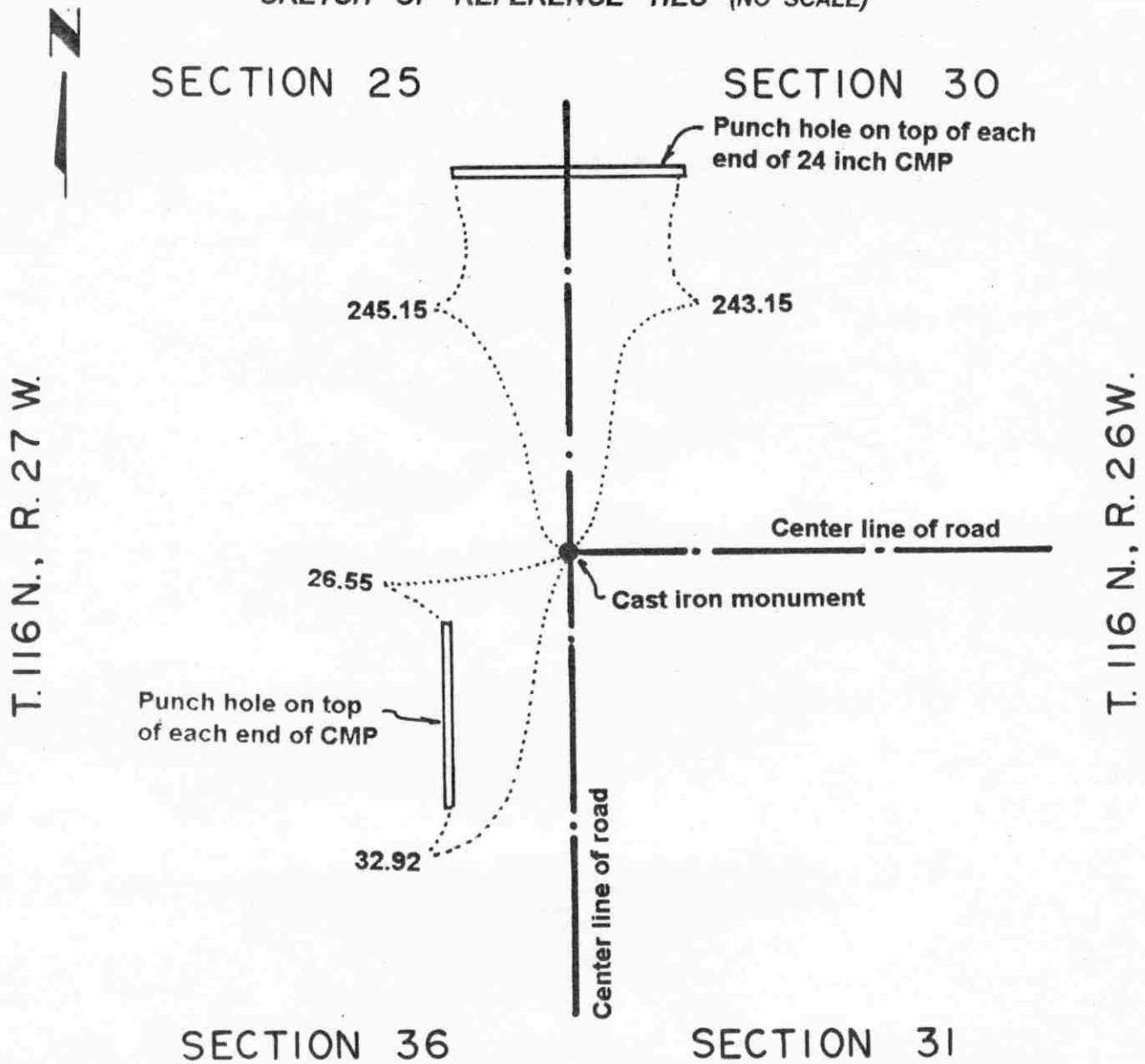
December, 1972. The Carver County Surveyor measured the east line of Section 36 and found the stone to be midway and on line between the section corners. They set an iron pipe over the stone and took reference ties.

September, 1973. The Carver County Surveyor placed a cast iron monument over found stone.

Certificate of Location of Government Corner

Northeast corner, Section 36, Township 116 North, Range 27 West

SKETCH OF REFERENCE TIES (NO SCALE)



Statement of evidence relative to this corner location on sheet 2

I hereby certify that this document was prepared by me or under my direct supervision.

Willard Pellinen
 Willard Pellinen
 McLeod County Surveyor
 License No. 9626.

Date Oct. 9, 1995

OFFICE OF THE COUNTY RECORDER
 MCLEOD COUNTY, MINNESOTA

I hereby certify that this document was filed in this office at 9 o'clock A. M. on the 13th day of October 19 95.

Carmen Ostlie Mulder, County Recorder

By _____, Deputy.

Document No. 268597

Certificate of Location of Government Corner

Northeast Corner, Section 36, Township 116 North, Range 27 West

1855. John Ryan of the General Land Office established this corner. He set a post in a marsh and marked 4 trees for bearing trees.

1968. Lindsey Engineering Company reported finding a sandstone monument.

July 27, 1971. Carver County Surveyor found a limestone monument down 1.2 feet below the surface of the road. They took ties and broke off the top portion of the stone and set a cast iron monument.

May 15, 1995. We checked the reference ties.

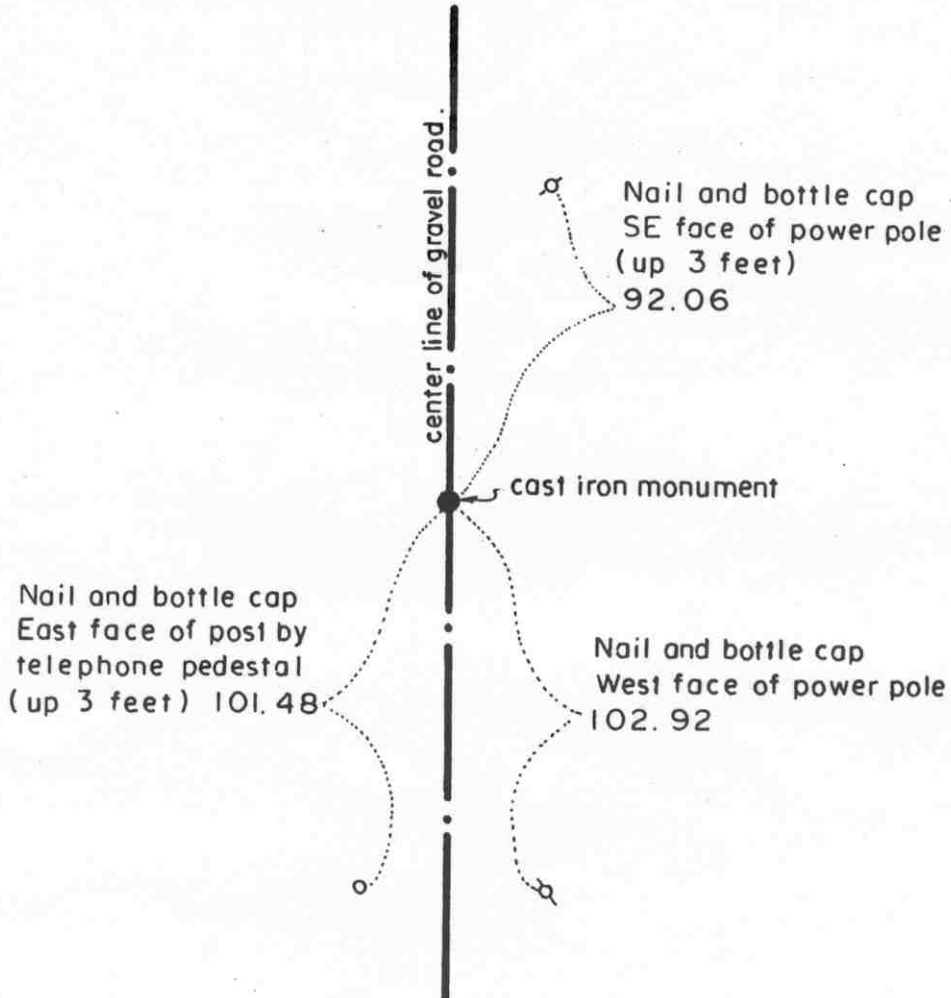
Certificate of Location of Government Corner

NORTH QUARTER corner, Section 36, Township 116 North, Range 27 West

SKETCH OF REFERENCE TIES (NO SCALE)



SECTION 25



SECTION 36

Statement of evidence relative to this corner location on sheet 2

I hereby certify that this document was prepared by me or under my direct supervision.

Willard Pellinen
Willard Pellinen
McLeod County Surveyor
License No. 9626.

Date August 25, 1994

OFFICE OF THE COUNTY RECORDER
MCLEOD COUNTY, MINNESOTA

I hereby certify that this document was filed in this office at 9 o'clock A. M. on the 9th day of Sept 19 94.

Carman Oelie Mulder County Recorder

By _____, Deputy.

Document No. 261760

Certificate of Location of Government Corner

North Quarter Corner, Section 36, Township 116 North, Range 27 West

November, 1856. E. N. Darling of the General Land Office set a post and marked a 12 inch elm and a 14 inch oak for bearing trees.

No occupation lines east or west to help locate north-south location of corner.

April 12, 1982. We set a temporary quarter corner on the center line of the north-south gravel road on a straight line between the northeast and northwest corners of Section 36.

July 27, 1982. We excavated for the corner at our temporary corner (John Tupa from Hutchinson with a backhoe). Down 3 feet below the surface of the road we found a very rotted wood stake. This was within 2-3 feet of being on a split between the section corners. We took available reference ties.

August 26, 1982. We set a Mcleod County cast iron monument at the corner and took additional reference ties.

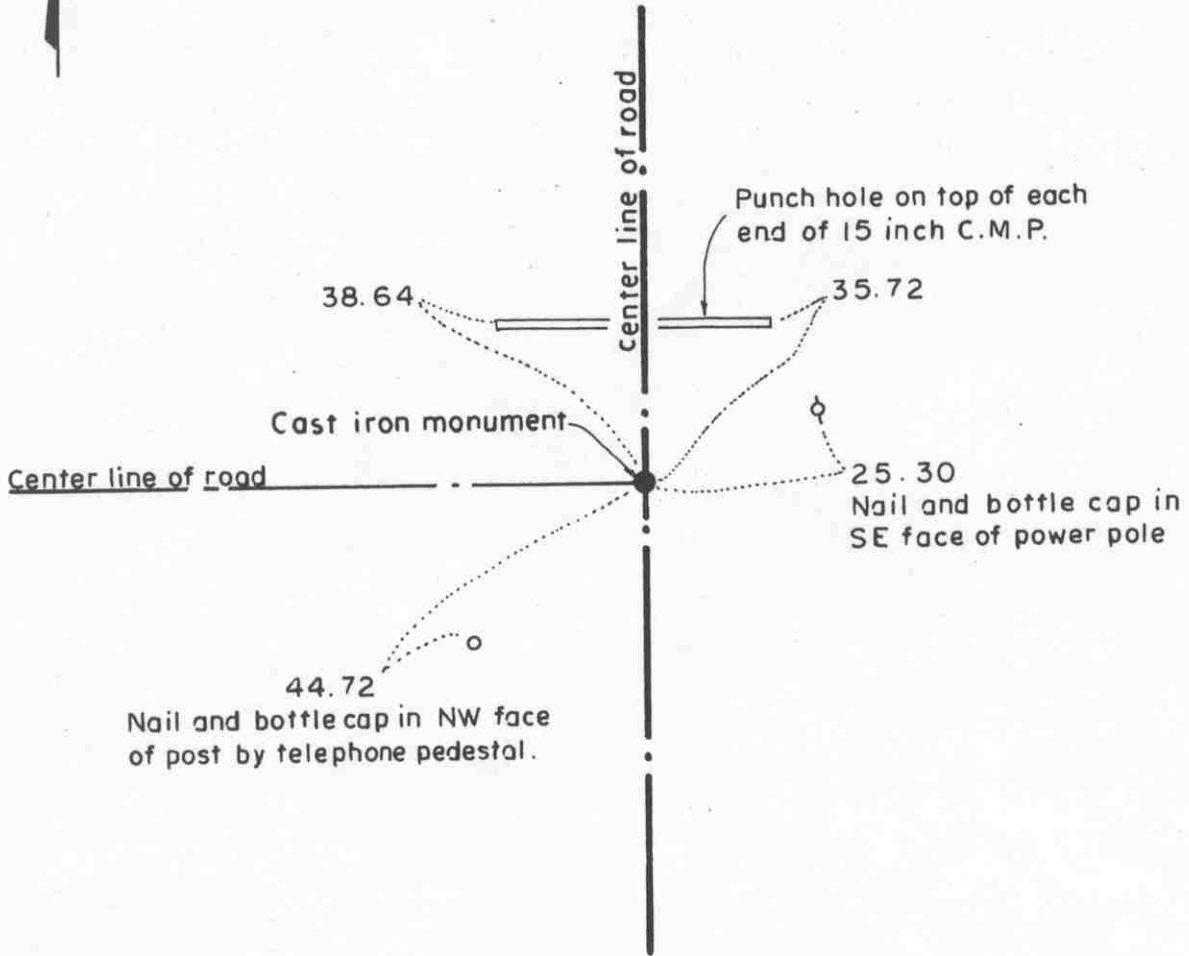
August 23, 1994. We found the cast iron monument in good condition and checked the reference ties.

Certificate of Location of Government Corner

NORTH QUARTER corner, Section 1, Township 115 North, Range 27 West

SKETCH OF REFERENCE TIES (NO SCALE)

SECTION 36, T. 116 N., R. 27 W.



SECTION 1, T. 115 N., R. 27 W.

Statement of evidence relative to this corner location on sheet 2

I hereby certify that this document was prepared by me or under my direct supervision.

Willard Pellinen
Willard Pellinen
McLeod County Surveyor
License No. 9626.

Date April 17, 1995

OFFICE OF THE COUNTY RECORDER
MCLEOD COUNTY, MINNESOTA

I hereby certify that this document was filed in this office at 9 o'clock A. M. on the 24th day of April 19 95.

Carmen Potliw Gulder, County Recorder

By _____, Deputy.

Document No. 265294

Certificate of Location of Government Corner
North Quarter Corner, Section 1, Township 115 North, Range 27 West

1855. John Ryan of the General Land Office established this corner. He set a post and marked a 12 inch oak and a 10 inch oak for bearing trees.

September 15, 1969. Dickman Knutson, county surveyor found an iron pipe at the center line intersection of roads north, south and west. He took available ties.

1970. Knutson set a McLeod County cast iron monument at the corner.

February 2, 1995. We found the monument in good condition down 8 inches below the surface of the gravel road. We took new reference ties.

Certificate of Location of Government Corner

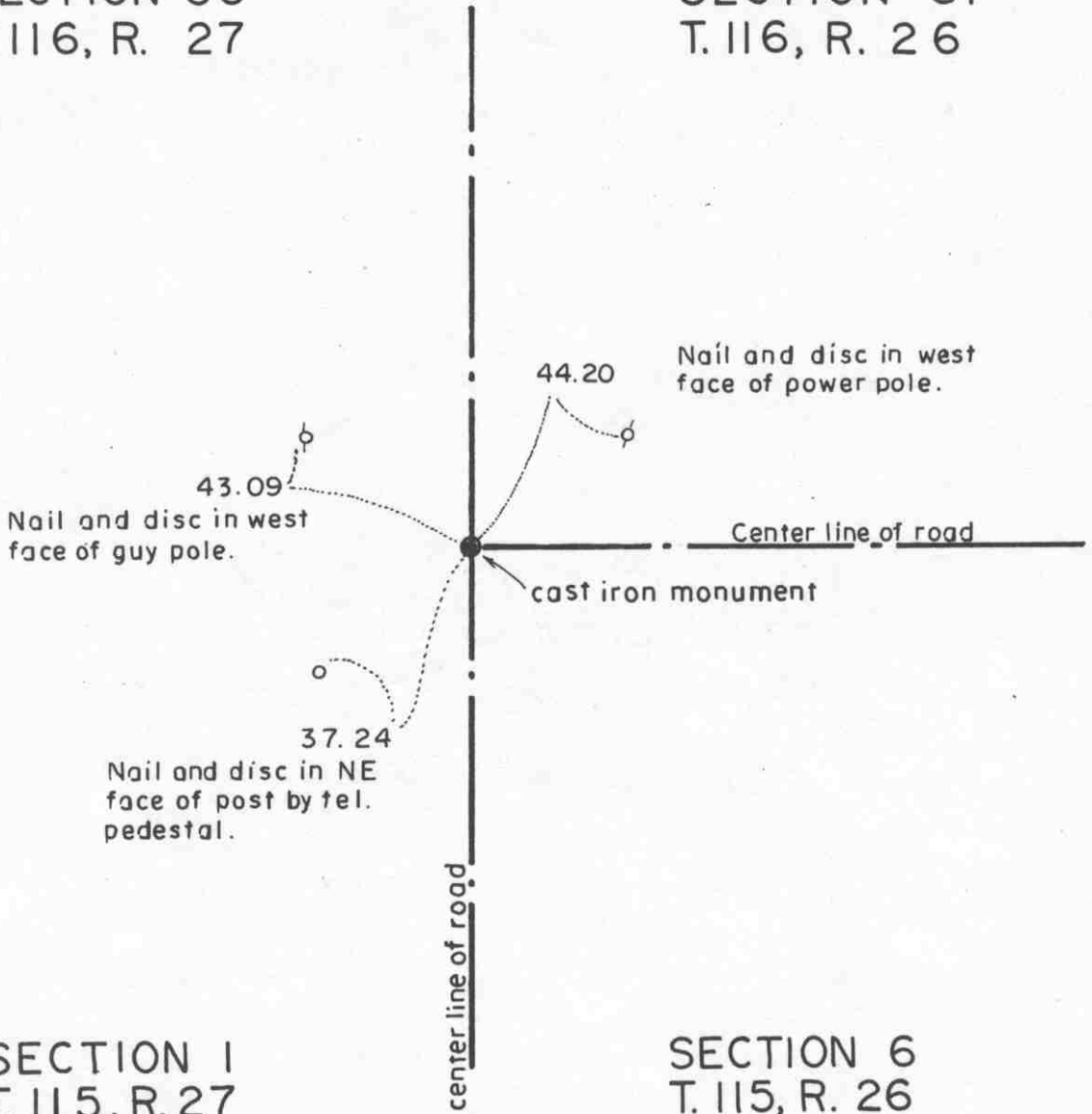
NORTHEAST corner, Section 1, Township 115 North, Range 27 West

SKETCH OF REFERENCE TIES (NO SCALE)



SECTION 36
T. 116, R. 27

SECTION 31
T. 116, R. 26



SECTION 1
T. 115, R. 27

SECTION 6
T. 115, R. 26

Statement of evidence relative to this corner location on sheet 2

I hereby certify that this document was prepared by me or under my direct supervision.

Willard Pellinen
Willard Pellinen
McLeod County Surveyor
License No. 9626.

Date April 17, 1995

OFFICE OF THE COUNTY RECORDER MCLEOD COUNTY, MINNESOTA

I hereby certify that this document was filed in this office at 9 o'clock A. M. on the 24th day of Apr 19 95.

Carmen Dotlie Gulder, County Recorder

By _____, Deputy.

Document No. 265293

***Certificate of Location of Government Corner
Northeast Corner, Section 1, Township 115 North, Range 27 West***

July, 1855. John Ryan of the General Land Office established this corner. He set a post and marked a 30 inch ash, a 30 inch elm, a 20 inch oak and a 16 inch oak for bearing trees.

1971. Carlisle Madson, Carver County Surveyor, set a cast iron monument over a found limestone monument. This location was accepted by Dickman Knutson, McLeod County Surveyor.

February 2, 1995. We found the monument in good condition down 8 inches below the surface of the gravel road and took available reference ties.